



## Camden Street, NW1

£840 Per week

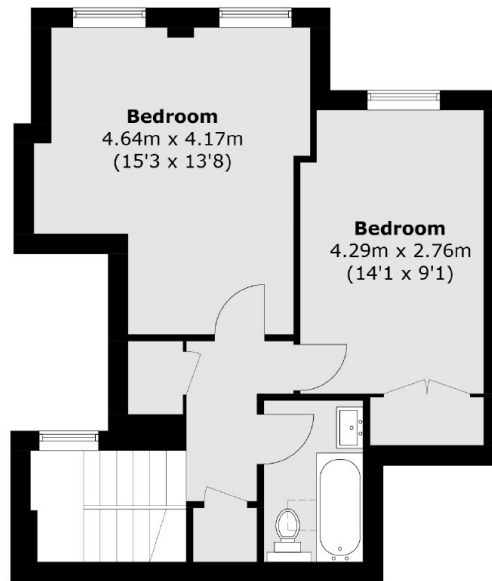
At approximately 932 sq.ft is this two double bedroom split-level apartment in great condition throughout. The property has a separate kitchen/reception room with lovely wood flooring.

Kingston House is close to Kings Cross, and Granary Square and Camden market are within close proximity, as is the well-kept greenery of Regent's Park. There is also a nearby canal towpath that provides a beautiful cycle route west to Little Venice and east to Hoxton.

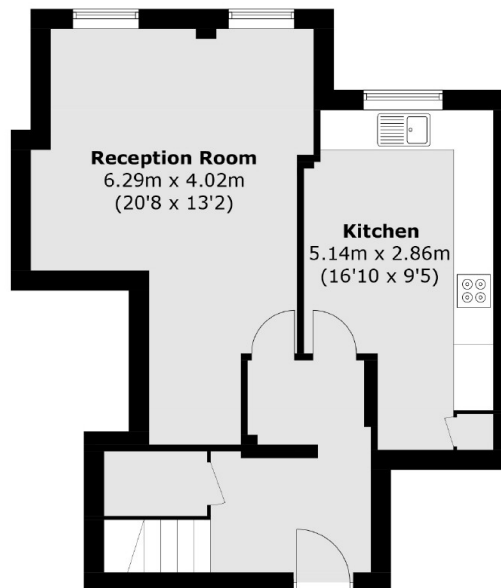
### Features

- Converted Three Bed
- Students Only
- Communal Garden
- Great Location
- Separate Kitchen
- Rent Includes Heating and Hot Water

Camden Street,  
London, NW1



**Fourth Floor**



**Third Floor**

Total area (approx.): 86.6 sq. m (932.2 sq. ft)