



Park Village East, NW1

£675,000

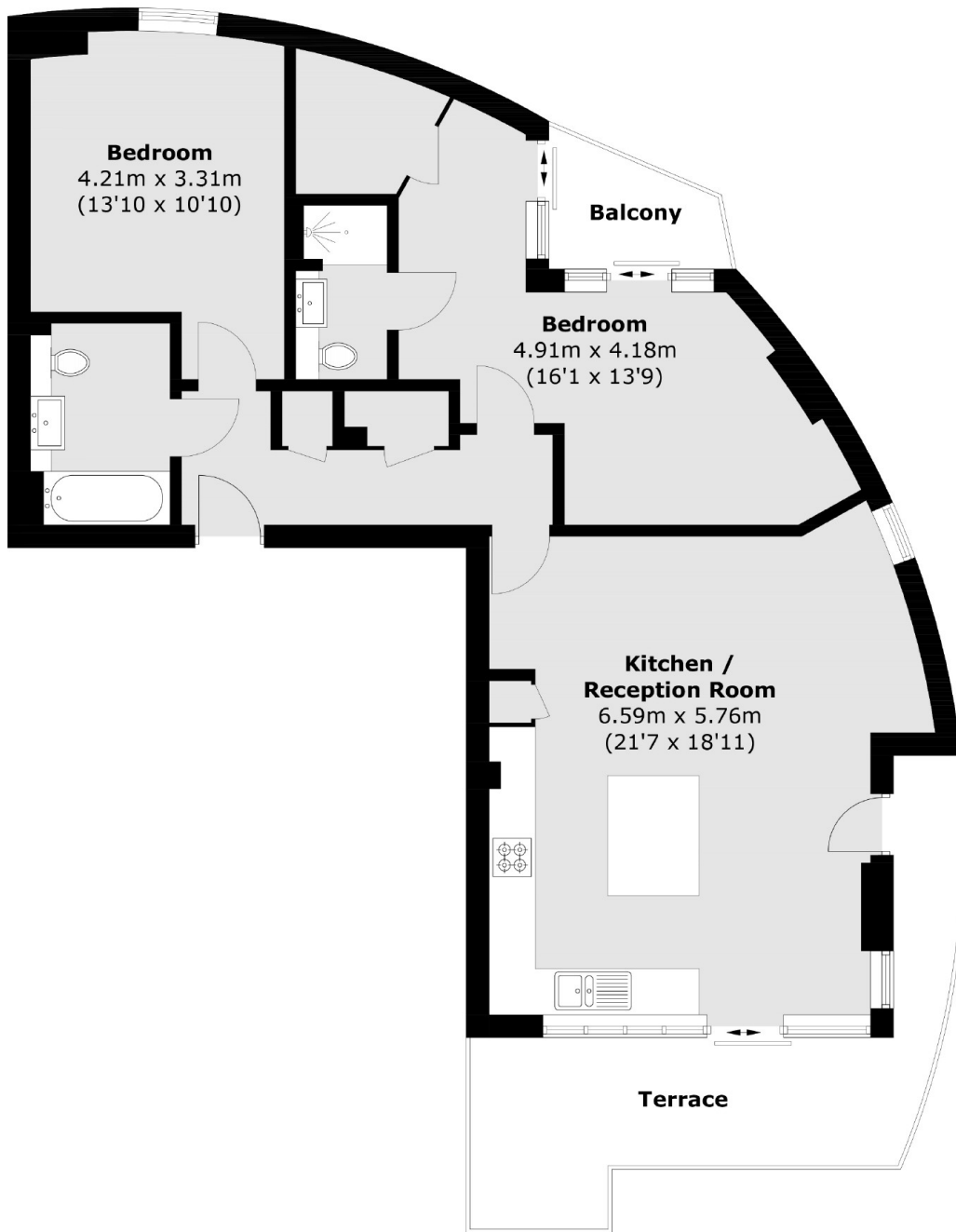
A well-presented two double bedroom flat, located on the 8th floor of this purpose built block with beautiful views across Central London and Regents Park. The property features two terraces, two bathrooms and a fully integrated kitchen.

Park Village East is well-situated for Regents Park, Mornington Crescent station, Euston station, Bright Horizons Regents Park Nursery, North Bridge House School and all local amenities.

Features

- Two Double Bedrooms
- Two Terraces
- Two Bathrooms
- Excellent Views
- Close to Public Transport
- Chain Free

Park Village East, London, NW1



Total area (approx.): 84.1 sq. m (905.2 sq. ft)
Balcony area (approx.): 3.2 sq. m (34.4 sq. ft)
Terrace area (approx.): 14.3 sq. m (153.9 sq. ft)

Dexters

Kentish Town & Camden
274 Kentish Town Road
London
NW5 2AA
Sales
020 7483 6390

Energy Rating: C. We aim to make our particulars both accurate and reliable. However they are not guaranteed; nor do they form part of an offer or contract. If you require clarification on any points then please contact us, especially if you're traveling some distance to view. Please note that appliances and heating systems have not been tested and therefore no warranties can be given as to their good working order.

 **RICS** | Regulated
Estate Agent
and Letting Agent

[dexters.co.uk](https://www.dexters.co.uk)