



## Jamestown Road, NW1

£1,384 Per week

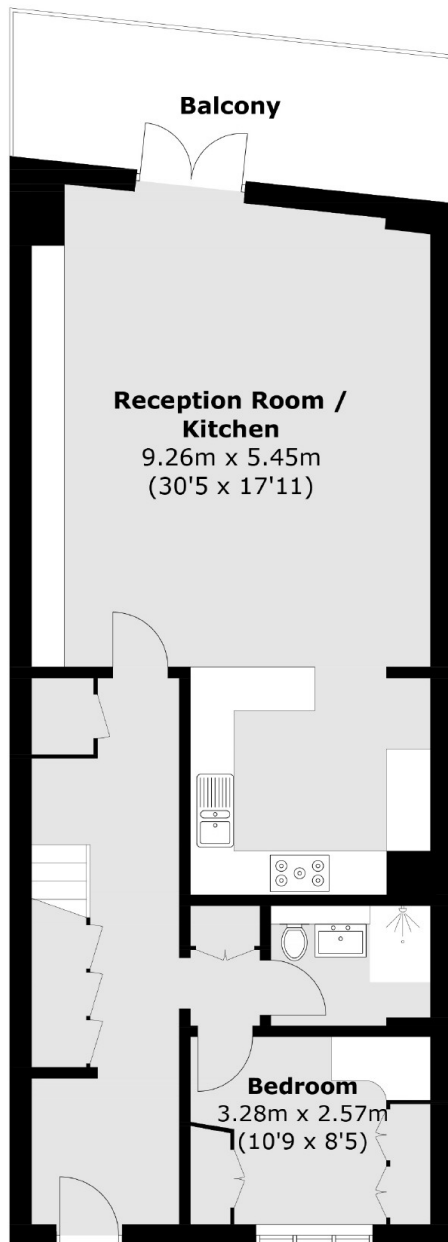
On the fifth and sixth floors in this highly sought after block in the heart of Camden is this three bedroom, three bathroom split-level apartment, measuring approximately 1,422 sq.ft.

Gilbey House, formerly a gin warehouse, is one of the premier blocks in Camden. It is very well-located to take advantage of the excellent local amenities. Both Primrose Hill Village and Regent's Park are in very close proximity.

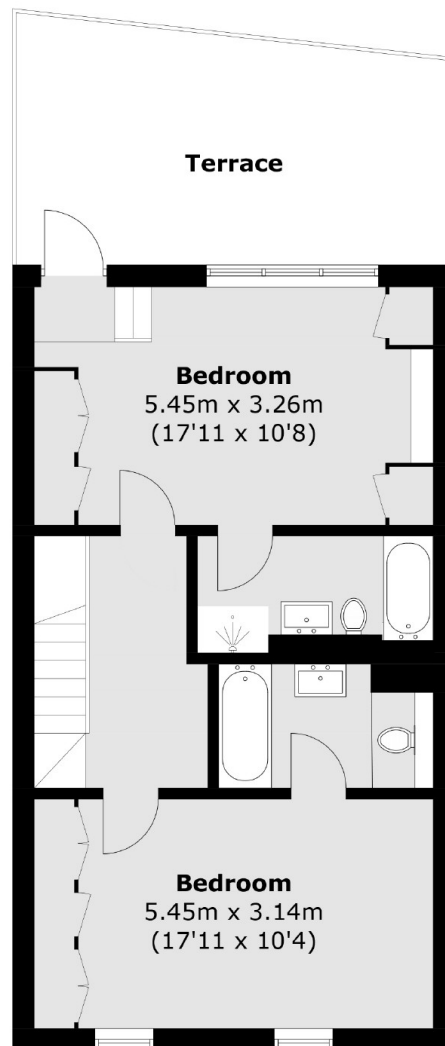
### Features

- Three Bedrooms
- Three Bathrooms
- Unfurnished
- Two Private Terraces
- Porter and Gym
- Secure Underground Parking

Jamestown Road,  
London, NW1



**Fifth Floor**



**Sixth Floor**

Total area (approx.): 132.1 sq. m (1421.9 sq. ft)  
Balcony: 30.3 sq. m (326 sq. ft)