



Malden Road, NW5

£650,000

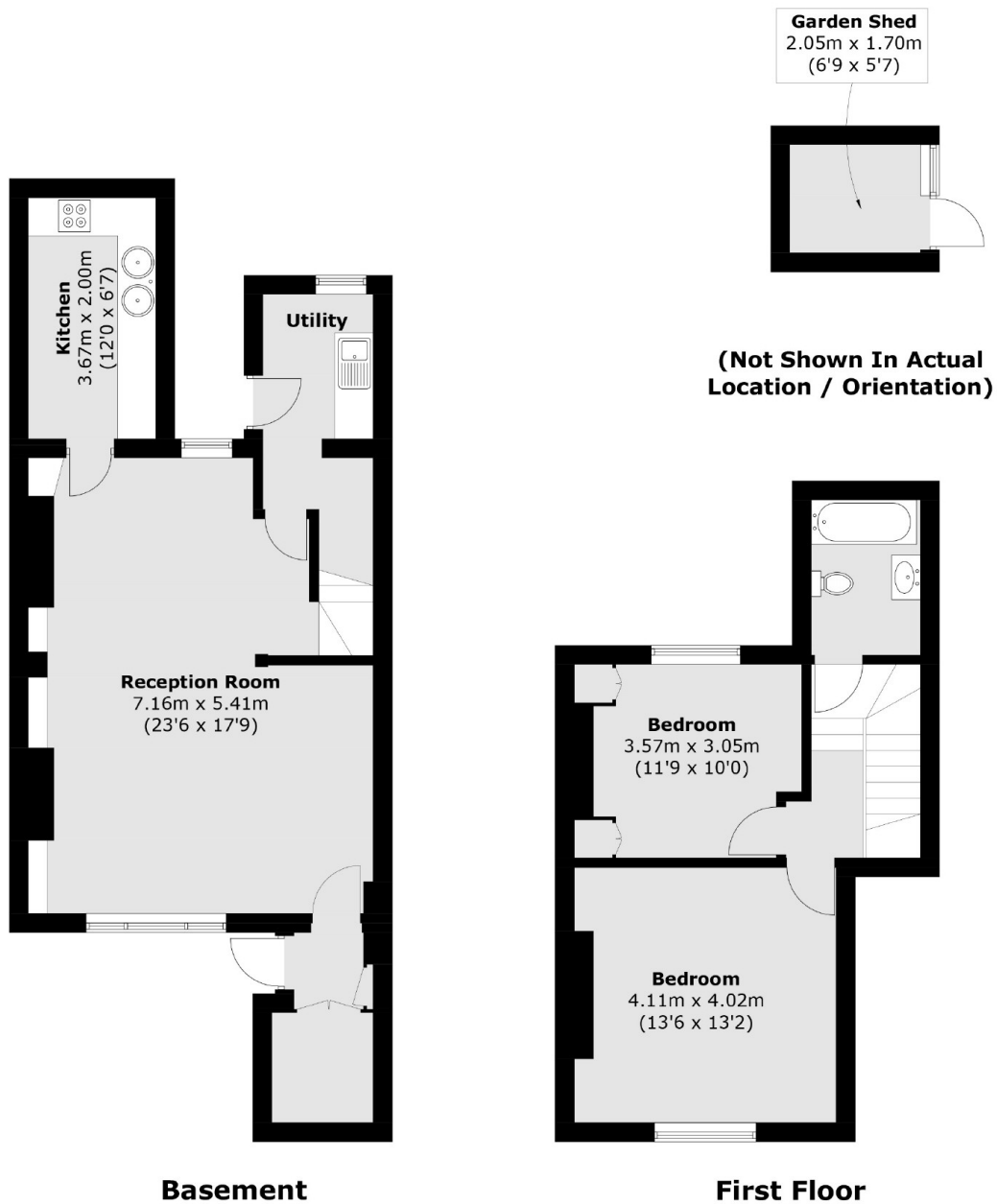
This split-level two double bedroom apartment is in great condition throughout. The flat has high ceilings, a separate kitchen, a large dining room and reception room leading out onto a private garden.

Conveniently located within easy reach of Kentish Town, Chalk Farm, Gospel Oak and is only a short distance to Hampstead Heath. Belsize Park underground is within a mile.

Features

- Two Double Bedrooms
- Chain Free
- Private Garden
- Leasehold
- P rivate Entrance
- Great Location

Malden Road, London, NW5



Total area (approx.): 94.3 sq. m (1,015.0 sq. ft)
Garden Shed (approx.): 3.6 sq. m (38.7 sq. ft)

Dexters

Kentish Town & Camden
274 Kentish Town Road
London
NW5 2AA
Sales
020 7483 6390

Energy Rating: D. We aim to make our particulars both accurate and reliable. However they are not guaranteed; nor do they form part of an offer or contract. If you require clarification on any points then please contact us, especially if you're traveling some distance to view. Please note that appliances and heating systems have not been tested and therefore no warranties can be given as to their good working order.

 **RICS** | Regulated
Estate Agent
and Letting Agent

[dexters.co.uk](https://www.dexters.co.uk)