



Caversham Road, NW5

£220,000

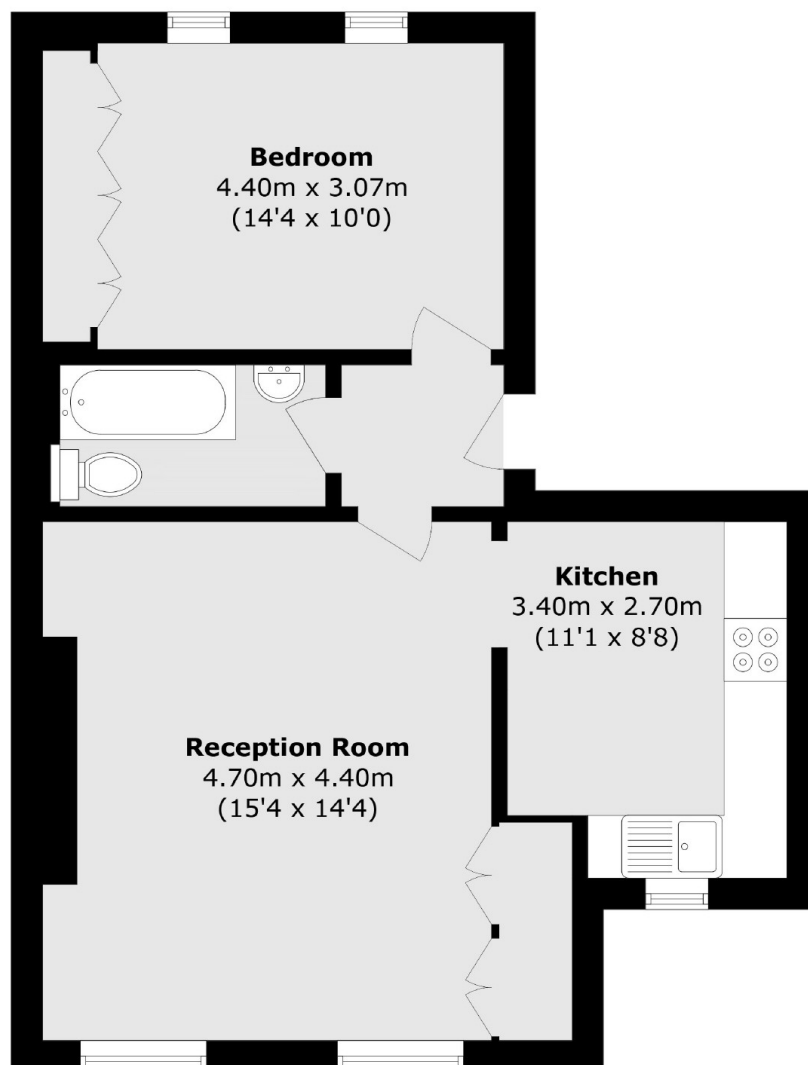
Shared Ownership At approximately 560 sq.ft is this fantastic large one double bedroom apartment in great condition throughout. The apartment has large windows that let in lots of natural light and a separate modern kitchen.

Caversham Road is centrally located on one of the area's most sought-after roads. The green open spaces of Hampstead Heath and Primrose Hill are just a short distance away, as well as excellent transport links (Kentish Town Underground, Overground and Thameslink).

Features

- Shared Ownership
- One Double Bedroom
- Great Condition
- Chain Free
- Leasehold
- Fantastic Location

Caversham Road, London, NW5



Total area (approx.): 52.1 sq. m (560.8 sq. ft)