



Leighton Crescent, NW5

£1,350,000

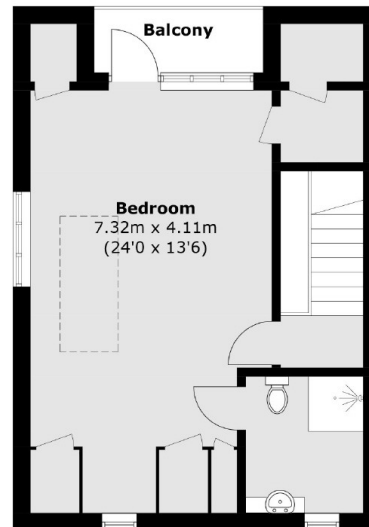
This fantastic four bedroom, two bathroom split level maisonette set on one of Kentish Town's most sought after roads. The apartments has high ceilings and large windows throughout that lets in lots of natural light and there are also two private terraces.

Leighton Crescent is moments away from Kentish Town High street and offers a wide variety of shops, cafés and restaurants as well as tube and rail links from Kentish Town Underground (Northern Line) and Thameslink station.

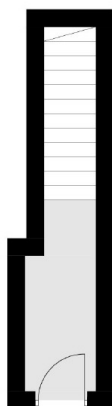
Features

- Four Bedrooms
- Leasehold
- Chain Free
- Two Terraces
- Great Condition
- Private Entrance

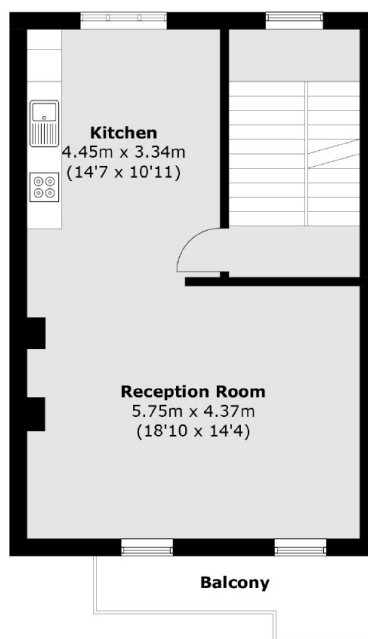
Leighton Crescent, London, NW5



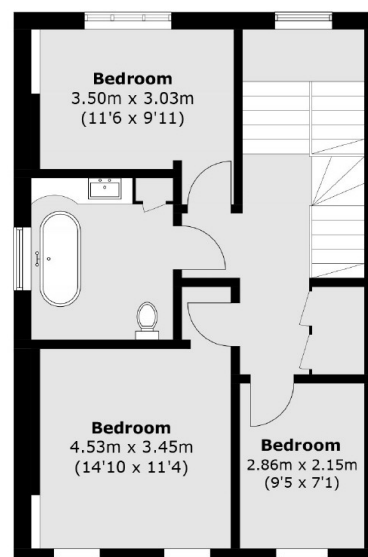
Third Floor



Ground Floor



First Floor



Second Floor

Total area (approx.): 153.6 sq. m (1653.2 sq. ft)
Balcony: 8.7 sq. m (93.6 sq. ft)