



## Mornington Crescent, NW1

£1,384 Per week

**Dexters**



## Mornington Crescent, NW1

A stunning recently refurbished four bedroom Georgian townhouse arranged over four floors, complete with a beautiful open plan kitchen/living room with bi-fold doors that lead onto a secluded decked garden.

This wonderful townhouse offers bright contemporary styling and boasts a separate living room, a spacious modern kitchen and ample storage throughout. Though modernised, the property retains many of its period features along with generous room sizes and wooden floors.

The property is conveniently located for access to both Mornington Crescent and Camden Town stations. It is also ideally situated for all the restaurants, bars, shops and cafe's Camden has to offer.

### Features

- Open Plan Kitchen
- Four Double Bedrooms
- Two and half Bathrooms
- Bi-Folding Doors
- Amazing Location
- Great Transport Links



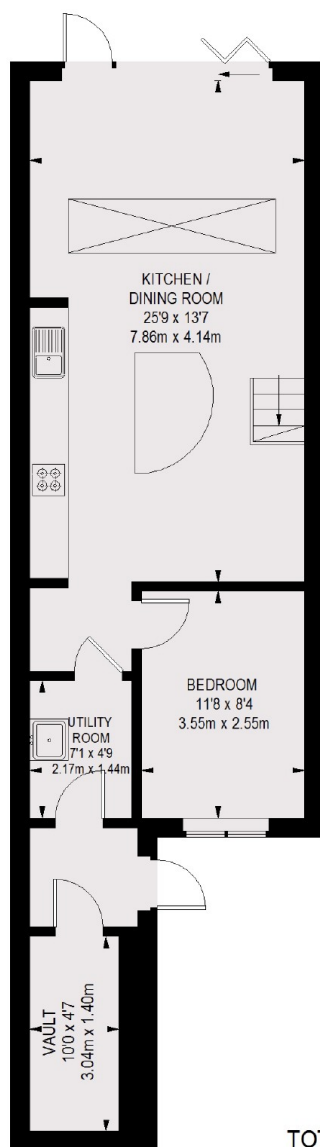




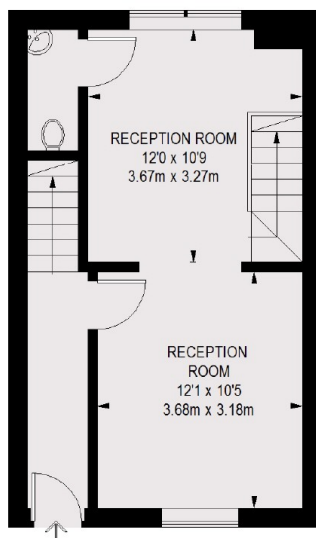




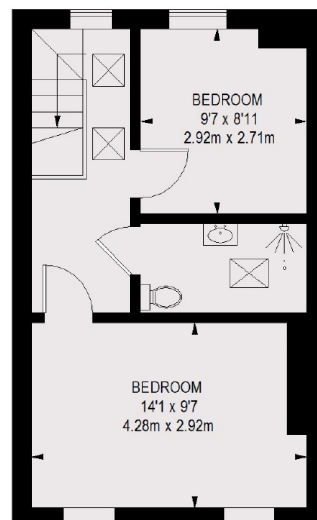
# Mornington Crescent, London, NW1



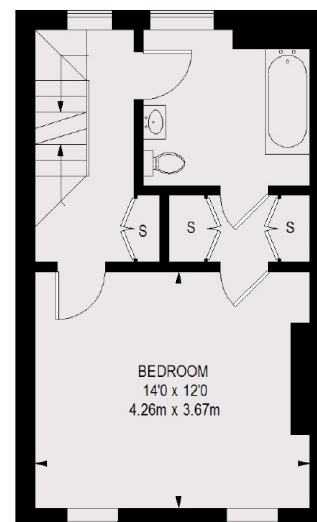
**LOWER  
GROUND FLOOR**



**GROUND FLOOR**



**SECOND FLOOR**



**FIRST FLOOR**

TOTAL APPROX. FLOOR AREA (INCLUDING VAULT)  
1666 SQ. FT. (154.79 SQ. M.)