



Hilddrop Road, N7

£634 Per week

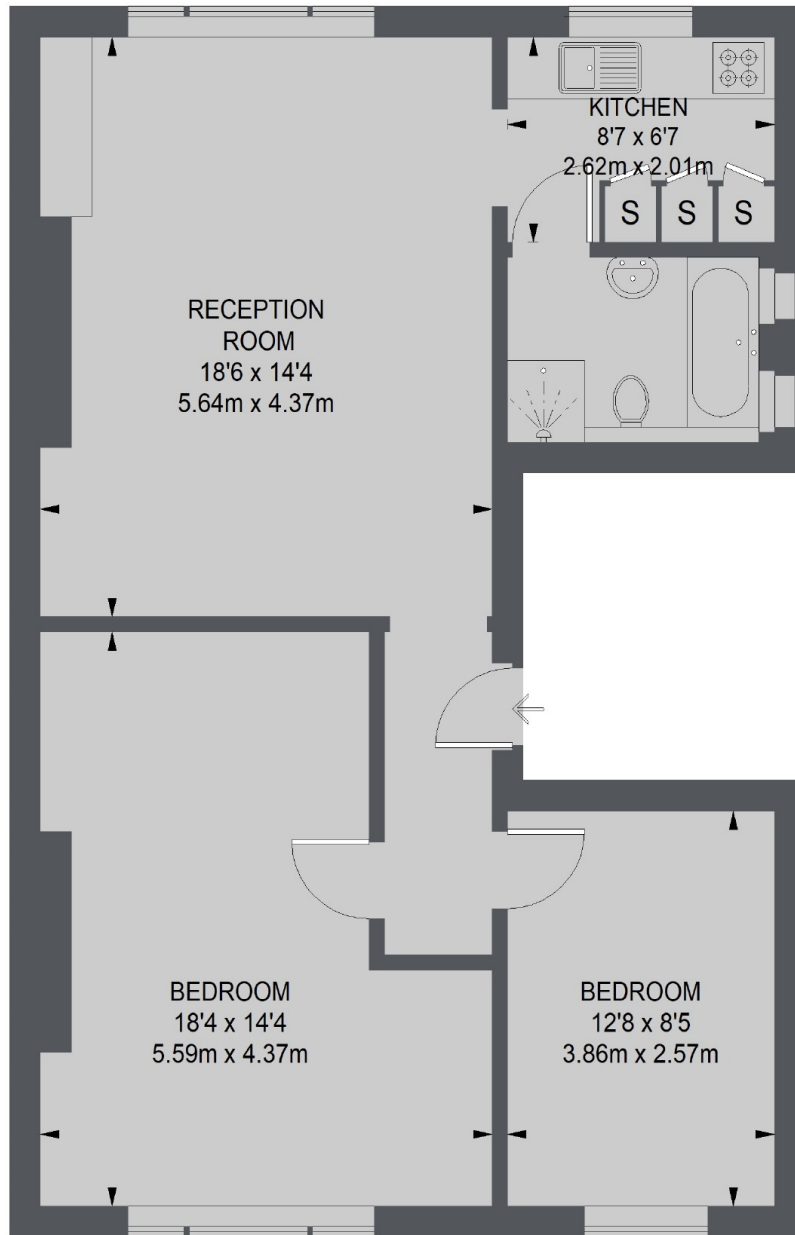
A bright and spacious two double room conversion apartment on the first floor of an impressive Victorian property with high ceilings and sash windows.

Hilddrop Road is a tree-lined street between Tufnell Park and Camden, with access to Caledonian Road and Tufnell Park stations.

Features

- Victorian Conversion
- First Floor
- Separate Kitchen
- High Ceilings
- Sash Windows
- Great Location

Hilldrop Road, London, N7



FIRST FLOOR

TOTAL APPROX. FLOOR AREA
770 SQ. FT. (71.49 SQ. M.)

Dexters

Kentish Town & Camden
274 Kentish Town Road
London
NW5 2AA
Lettings
020 7483 6391

Energy Rating: C. We aim to make our particulars both accurate and reliable. However they are not guaranteed; nor do they form part of an offer or contract. If you require clarification on any points then please contact us, especially if you're traveling some distance to view. Please note that appliances and heating systems have not been tested and therefore no warranties can be given as to their good working order.

 **RICS** | Regulated
Estate Agent
and Letting Agent

[dexters.co.uk](https://www.dexters.co.uk)