



Tufnell Park Road, N7

£3,500 Per week

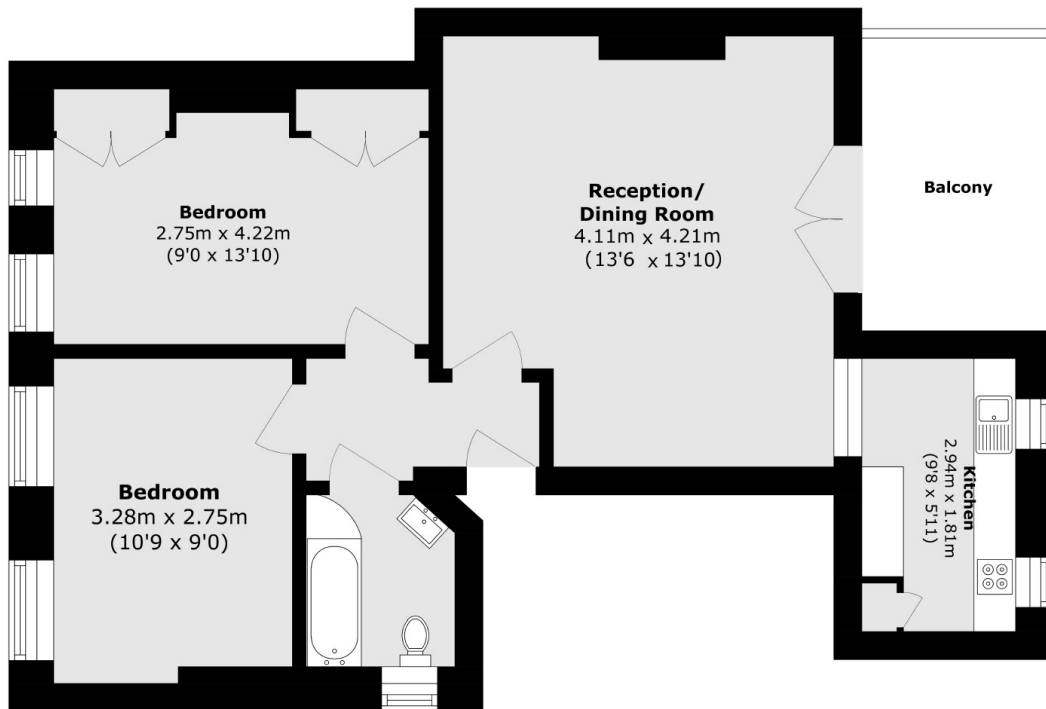
A very well-presented two double bedroom apartment in a Victorian semi-detached house. This property offers a large reception room and kitchen area, one bathroom and lots of storage space throughout.

Located in the heart of Tufnell Park and close to the many shops, restaurants and cafés on both Fortress Road and Holloway Road. Tufnell Park underground station (Northern line) is at the end of the road.

Features

- Short Let
- Two Double Bedrooms
- Well Presented
- Fitted Kitchen
- First Floor Flat
- High Ceilings

Tufnell Park Road, London, N7



Total area (approx.): 53.2 sq. m (572.6 sq. ft)

Balcony area (approx.): 6.3 sq. m (67.8 sq. ft)