

Collard Place, NW1

£750,000

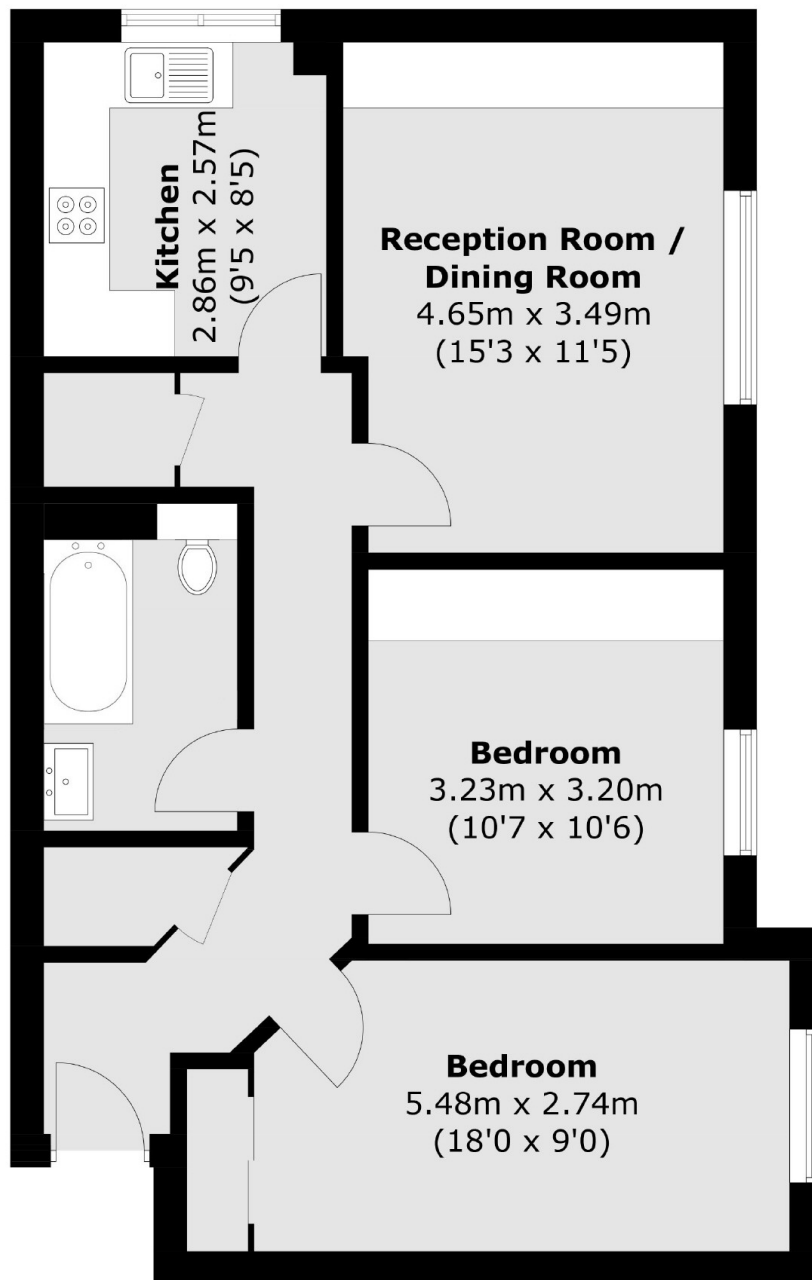
Forming part of this popular private gated development is this stunning south-west facing two double bedroom apartment on the top floor with an extensive private loft. The property is in excellent condition throughout with a modern kitchen and bathroom plus a separate reception room with high quality bespoke fitted storage and solid bamboo wood flooring throughout.

Collard Place is conveniently located in a highly desirable residential area, on a peaceful tree-lined no-through road, whilst remaining close to the amenities in Camden, Primrose Hill, Belsize Park and Kentish Town. Chalk Farm Underground Station is also 0.4 miles away.

Features

- Two Double Bedrooms
- Private Parking Space
- Extensive Private Loft
- Secure Gated Development
- Communal Garden
- Fantastic Condition

Collard Place,
London, NW1



Total area (approx.): 68.4 sq. m (736.2 sq. ft)

Dexters

Kentish Town & Camden
274 Kentish Town Road
London
NW5 2AA
Sales
020 7483 6390

Energy Rating: C. We aim to make our particulars both accurate and reliable. However they are not guaranteed; nor do they form part of an offer or contract. If you require clarification on any points then please contact us, especially if you're traveling some distance to view. Please note that appliances and heating systems have not been tested and therefore no warranties can be given as to their good working order.

 **RICS** | Regulated
Estate Agent
and Letting Agent

[dexters.co.uk](https://www.dexters.co.uk)