



Grafton Road, NW5

£1,650,000

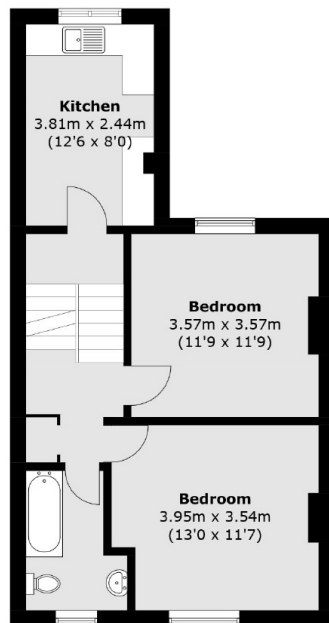
A five bedroom house in need of refurbishment. Planning permission has been applied for the erection of a single-storey rear extension on the ground floor to create an outstanding family home, to increase the size of the property to approximately 2,050 sq ft. There is also a separate permission for the erection of a new stand-alone garden studio/office. Plans can be provided on request.

Grafton Road is a short walk from the Parliament Hill entrance to Hampstead Heath with easy access to the open air lido and amazing views over London. Gospel Oak overground station is the closest station, with Kentish Town underground also close by.

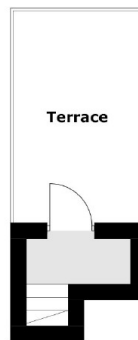
Features

- Five Bedrooms
- Freehold
- Chain Free
- Large Private Garden
- Permission For An Outhouse
- In Need Of Refurbishment

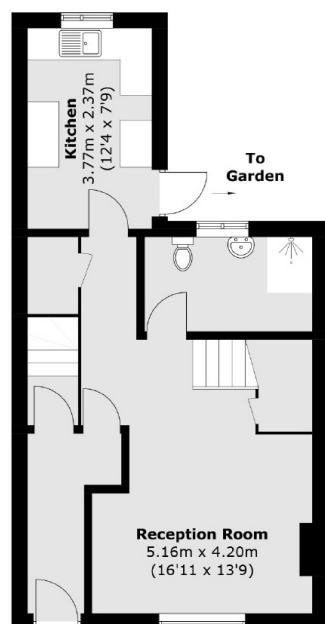
Grafton Road, London, NW5



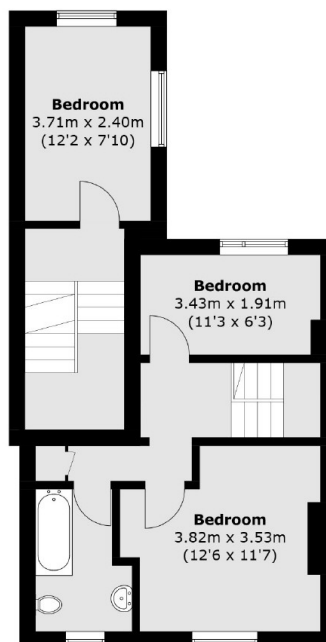
Second Floor



Third Floor



Ground Floor



First Floor

Total area (approx.): 149.4 sq. m (1,608.1 sq. ft)
Terrace : 10.1 sq. m (108.7 sq. ft)

Dexters

Kentish Town & Camden
274 Kentish Town Road
London
NW5 2AA
Sales
020 7483 6390

Energy Rating: . We aim to make our particulars both accurate and reliable. However they are not guaranteed; nor do they form part of an offer or contract. If you require clarification on any points then please contact us, especially if you're traveling some distance to view. Please note that appliances and heating systems have not been tested and therefore no warranties can be given as to their good working order.



dexters.co.uk