



## Queens Crescent, NW5

### £750,000

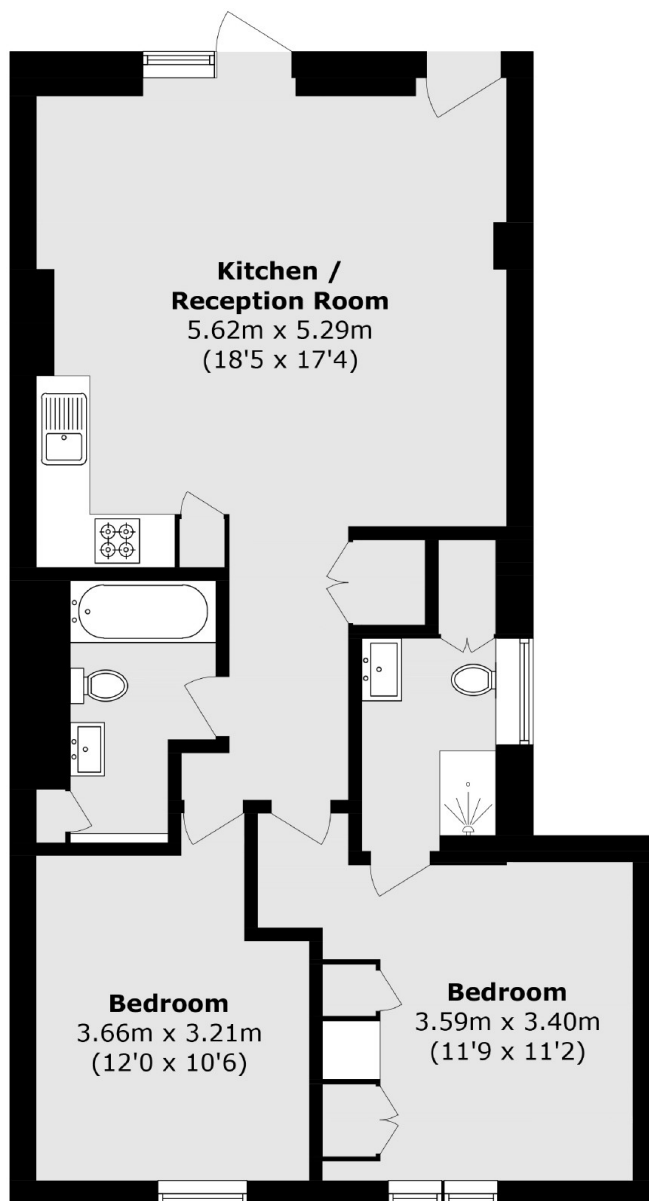
A fantastic two double bedroom, two bathroom garden flat. The apartment has its own private entrance with a modern open plan kitchen / reception room which leads out onto a private patio garden.

Queens Crescent is in a quiet cul-de-sac, with nearby transport links including the underground stations of Chalk Farm and Belsize Park (Northern line). Close to the green open spaces of Primrose Hill and Hampstead Heath.

### Features

- Two Double Bedrooms
- Two Bathrooms
- Chain Free
- Share Of Freehold
- Private Entrance
- Private Front Garden

# Queens Crescent, London, NW5



Total area (approx.): 70.9 sq. m (763.2 sq. ft)