



**Oakley Square, NW1**  
**£2,995,000**

**Dexters**



## Oakley Square, NW1

This stunning four bedroom penthouse in the heart of Camden Town with a fantastic large private terrace with direct views over London's horizon. The penthouse comes with two allocated parking spaces and concierge service

The penthouse includes a main bedroom with an en suite bathroom, three additional double bedrooms, two more bathrooms, a spacious and bright reception room, a fully fitted kitchen and a separate dining room. There are two designated parking spaces, concierge service and a 673 sq.ft private terrace providing stunning views of London's horizon.

Oakley Square looks over a local park and is within walking distance of Mornington Crescent Tube Station, Euston Station and Kings Cross St. Pancras Station.

### Features

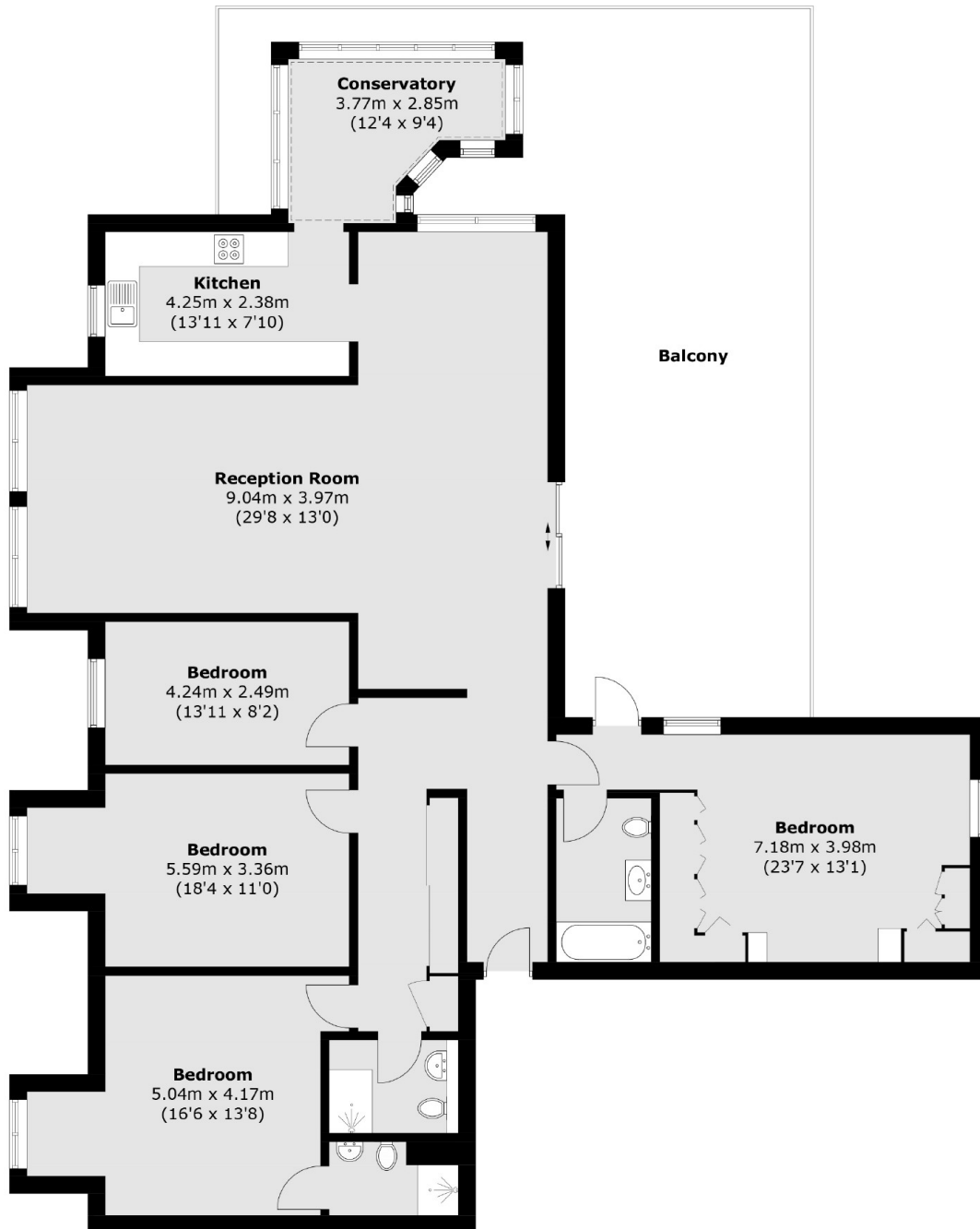
- Penthouse
- Four Double Bedrooms
- Large Private Terrace
- Two Allocated Parking Spaces
- Concierge Service
- Share Of Freehold







# Oakley Square, London, NW1



Total area (approx.): 172.1 sq. m (1,852.5 sq. ft)  
Balcony area (approx.): 62.6 sq. m (673.8 sq. ft)

## Dexters

Kentish Town & Camden  
274 Kentish Town Road  
London  
NW5 2AA  
Sales  
020 7483 6390

Energy Rating: C. We aim to make our particulars both accurate and reliable. However they are not guaranteed; nor do they form part of an offer or contract. If you require clarification on any points then please contact us, especially if you're traveling some distance to view. Please note that appliances and heating systems have not been tested and therefore no warranties can be given as to their good working order.

 **RICS** | Regulated  
Estate Agent  
and Letting Agent

[dexters.co.uk](https://www.dexters.co.uk)