



Lady Margaret Road, NW5

£850,000

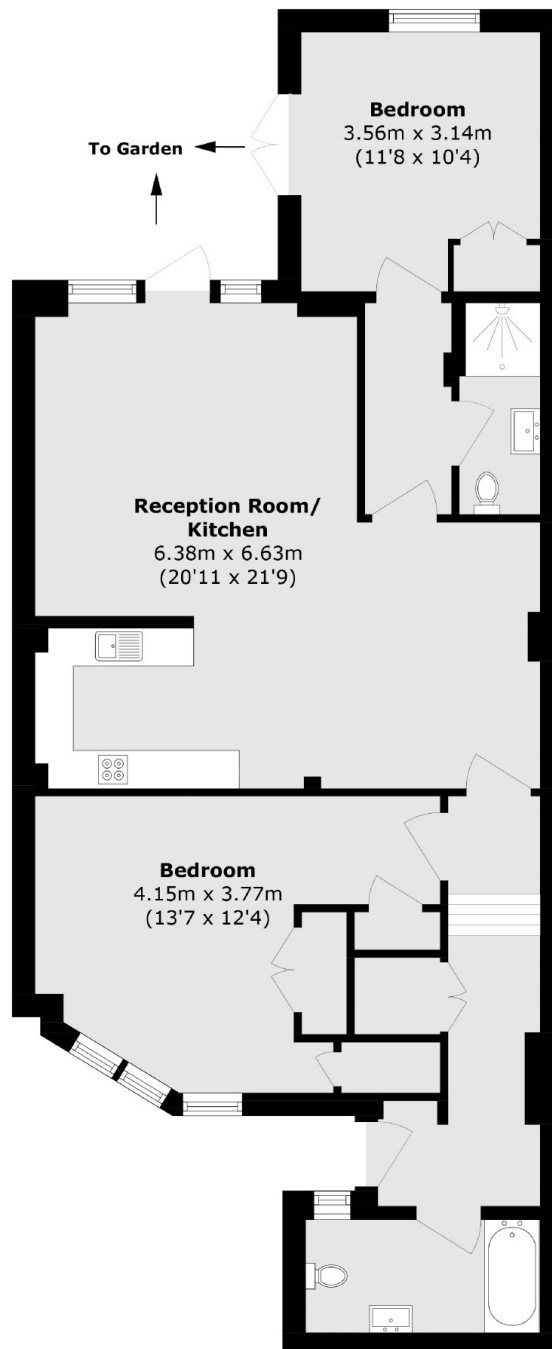
On one of the most desirable roads in Kentish Town is this two bedroom garden apartment. Finished to a high standard, the flat has a 20ft open plan kitchen/reception area that leads directly to a private garden.

Lady Margaret Road is in a key position with immediate access to Kentish Town tube (Northern line), the wonderful range of independent retailers on Fortress Road, and is still within reach of Hampstead Heath.

Features

- Two Double Bedrooms
- Two Bathrooms
- Private Garden
- Leasehold
- Private Entrance
- Great Condition

Lady Margaret Road, London, NW5



Total area (approx.): 86.8 sq. m (934.3 sq. ft)

Dexters

Kentish Town & Camden
274 Kentish Town Road
London
NW5 2AA

Sales
020 7483 6390

Energy Rating: C. We aim to make our particulars both accurate and reliable. However they are not guaranteed; nor do they form part of an offer or contract. If you require clarification on any points then please contact us, especially if you're traveling some distance to view. Please note that appliances and heating systems have not been tested and therefore no warranties can be given as to their good working order.

 **RICS** | Regulated
Estate Agent
and Letting Agent

[dexters.co.uk](https://www.dexters.co.uk)