

Fortess Road, NW5

£650,000

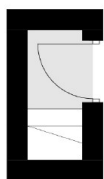
Forming part of this period building is this split-level two double bedroom apartment. The property has a modern kitchen, lovely wood flooring in the living room and large windows letting in lots of natural light.

Fortess Road is well-situated for the many popular local bars and pubs of Kentish Town and Tufnell Park, as well as the diverse range of shops along the High Street. Kentish Town (Northern line and Thameslink) and Tufnell Park station are within close proximity as well as the beautiful Hampstead Heath.

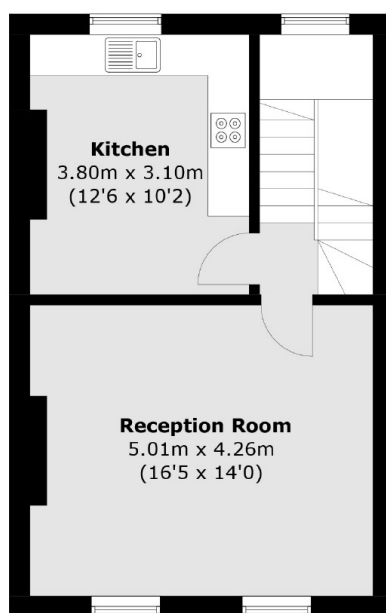
Features

- Two Bedrooms
- Split-Level
- Chain Free
- Separate Kitchen
- Great Transport Links
- Share of Freehold

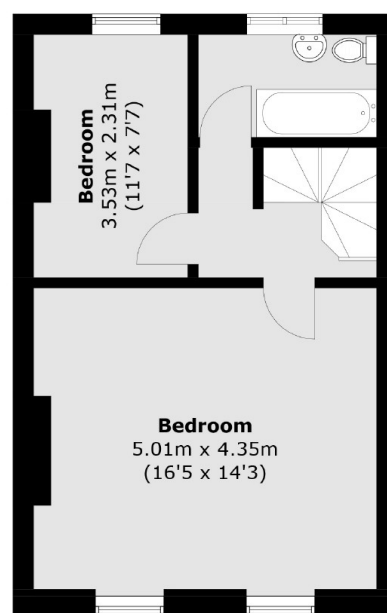
Fortess Road, London, NW5



First Floor



Second Floor



Third Floor

Total area (approx.): 83.6 sq. m (899.8 sq. ft)