



Oseney Crescent, NW5

£1,100,000

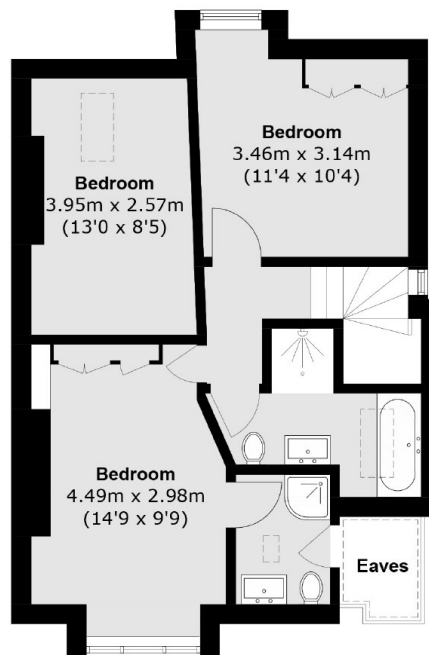
A spacious three/four bedroom property with a separate office spread over two floors in the heart of Kentish Town. The property has a bright modern open plan living area with wooden floors and two bathrooms.

Oseney Crescent is centrally located moments from the heart of Kentish Town and Camden School for Girls is just 0.2 miles away. The green open spaces of Hampstead Heath and Primrose Hill are also just a short walk away, as well as excellent transport links (Kentish Town Underground, Overground and Thameslink).

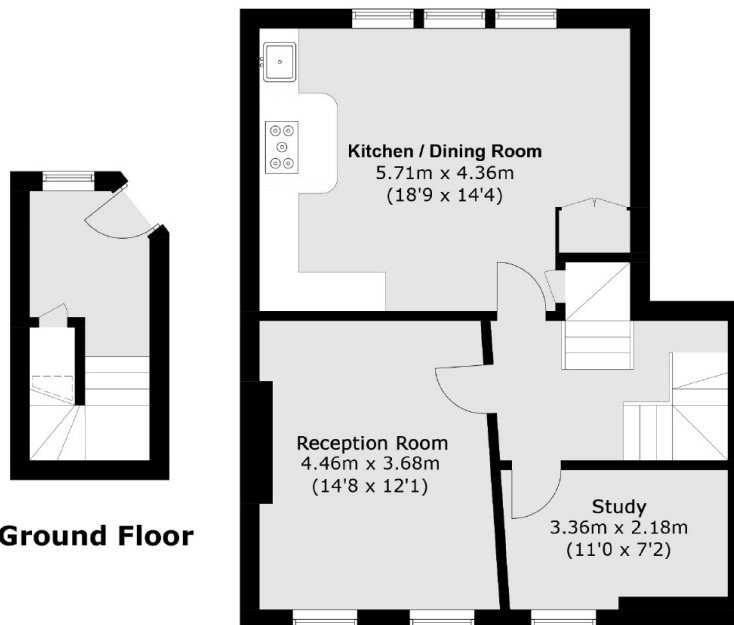
Features

- Three/Four Bedrooms
- Separate Office
- Two Bathrooms
- Split-Level
- Chain Free
- Great Location

Oseney Crescent, London, NW5



Second Floor



First Floor

Total area (approx.): 113.2 sq. m (1,218.5 sq. ft)