

Prince Of Wales Road, NW5

£1,100,000

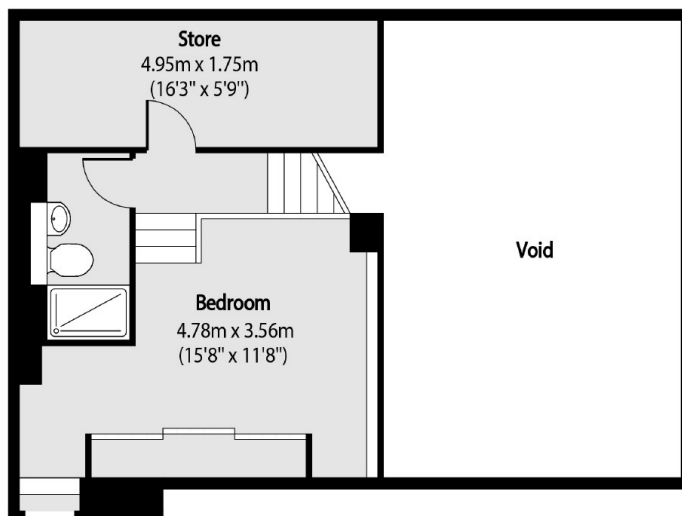
Forming the second and third floor of this stunning loft style apartment is this fantastic and unique two double bedroom apartment finished to an excellent standard throughout. The property has an impressive open plan kitchen / reception room, fantastic ceiling heights and lovely wood flooring.

Situated on the northern side of Prince of Wales Road, between Grafton Road and Anglers Lane, Underground stations on the Northern Line as well as National Rail stations provide easy access to the City, West End and beyond. The magnificent open spaces of Hampstead Heath and Regent's Park are close by.

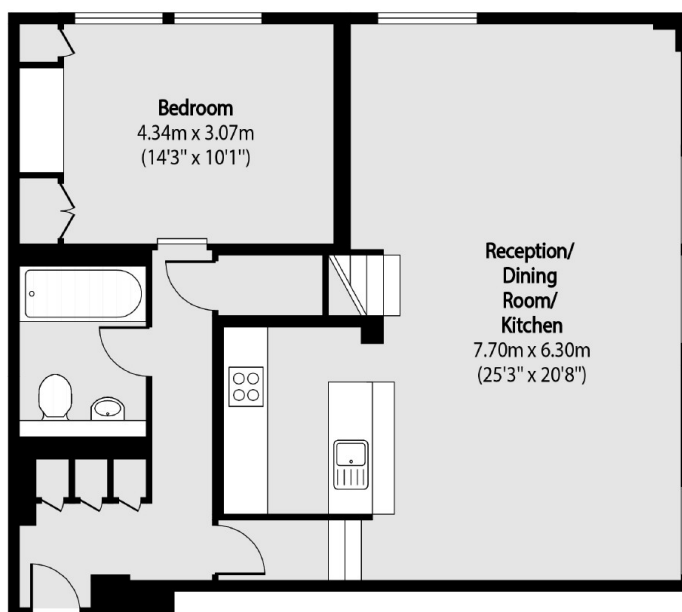
Features

- Two Bedrooms
- Two Bathrooms
- Leasehold
- Chain Free
- Great Location
- Communal Roof Terrace

Prince Of Wales Road, London, NW5



Third Floor



Second Floor

Total area (approx): 101.64 sq m (1094 sq. ft)
(Excluding Void)