



## St. Pancras Way, NW1

### £445,000

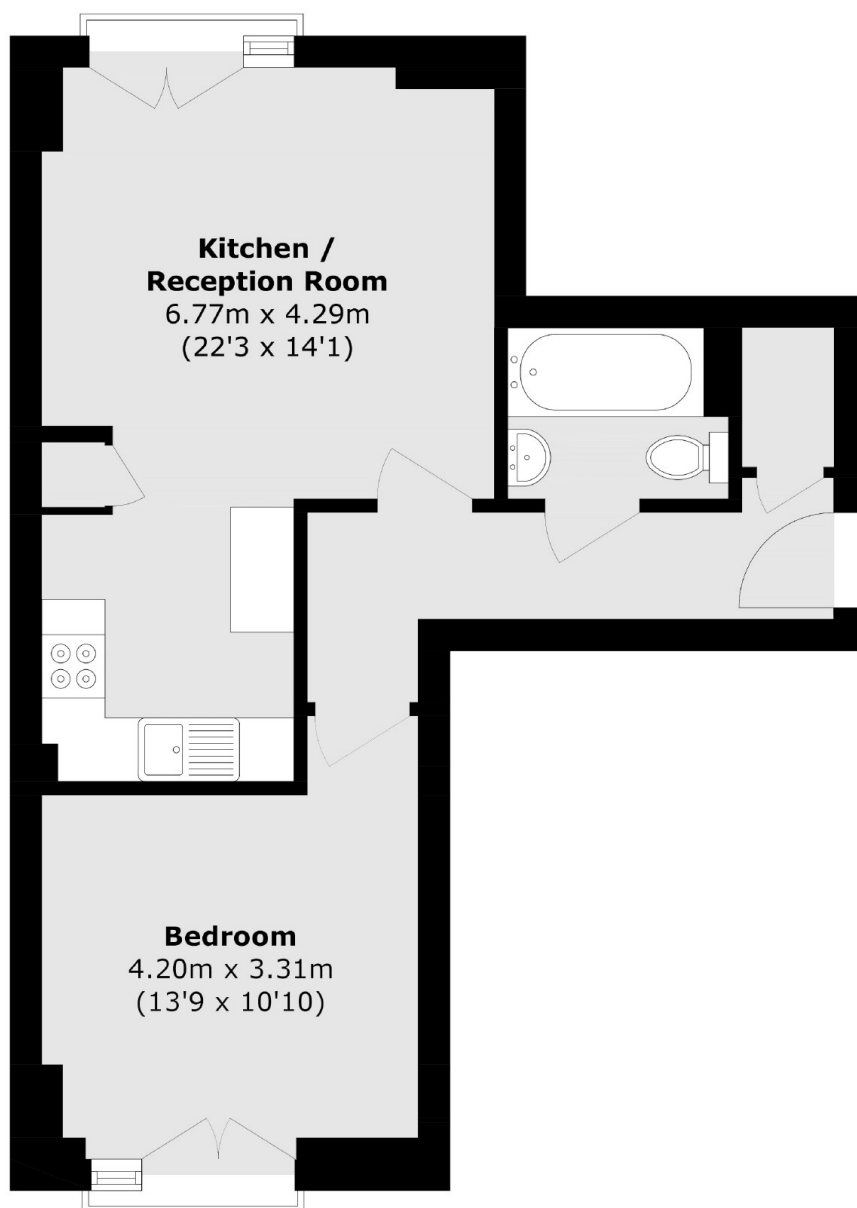
This one double bedroom apartment is set on the fifth floor of this purpose built block with lift access. The property has an open plan kitchen / reception room and canal views.

St. Pancras Way is in the heart of Camden Town, close to Camden Market, Regent's Park, an array of shops, restaurants and bars, and within half a mile of Camden Town (Northern line) and Camden Road (Overground) stations.

### Features

- One Double Bedroom
- Canal Views
- Leasehold
- Chain Free
- Top Floor
- Great Location

# St. Pancras Way, London, NW1



Total area (approx.): 49.6 sq. m (533.8 sq. ft)