



Kiln Place, NW5

£610 Per week

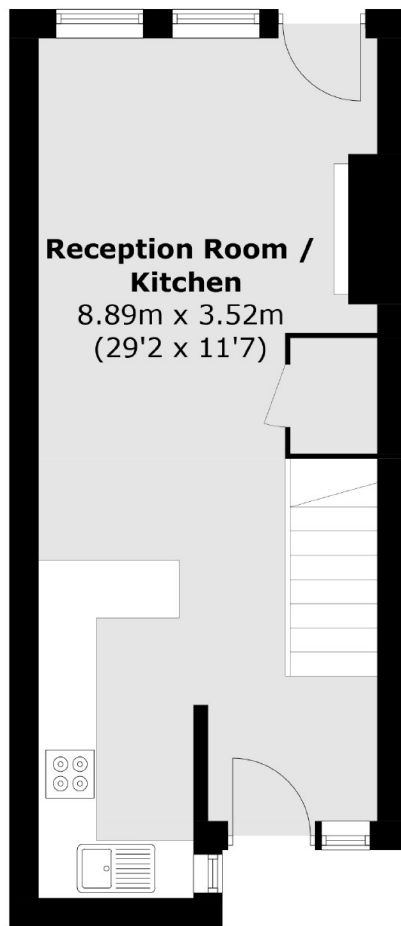
Two sharers or families only due to HMO license. A newly renovated three bedroom split level maisonette with private rear garden and balcony in the heart of Gospel Oak The property boasts bright and spacious accommodation including a large living room, modern kitchen, two double bedrooms, one single bedroom plus a modern family bathroom.

Kiln Place is just moments away from Hampstead heath and within easy reach of the London Overground and the Northern Line. The popular shops, pubs and restaurants of lower Hampstead are also close by.

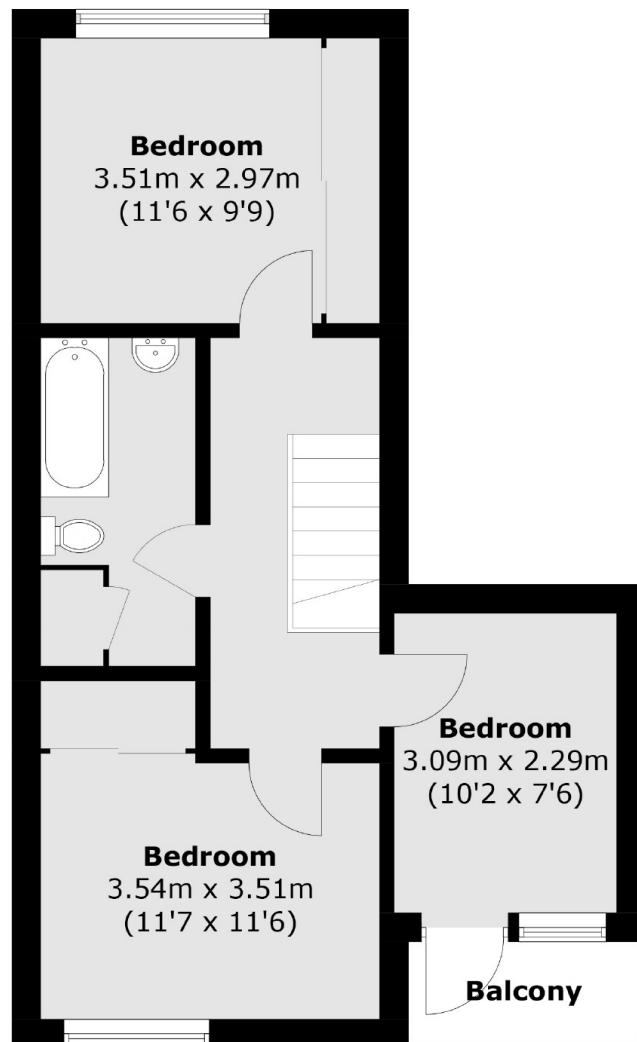
Features

- Great Location
- Modern Appliances
- Three Bedrooms
- Newly Refurbished
- Secluded Garden
- Good Storage

Kiln Place,
London, NW5



Ground Floor



First Floor

Total area (approx.): 73.1 sq. m (786.8 sq. ft)
Balcony: 2.5 sq. m (26.9 sq. ft)