



Wolsey Mews, NW5

£500,000

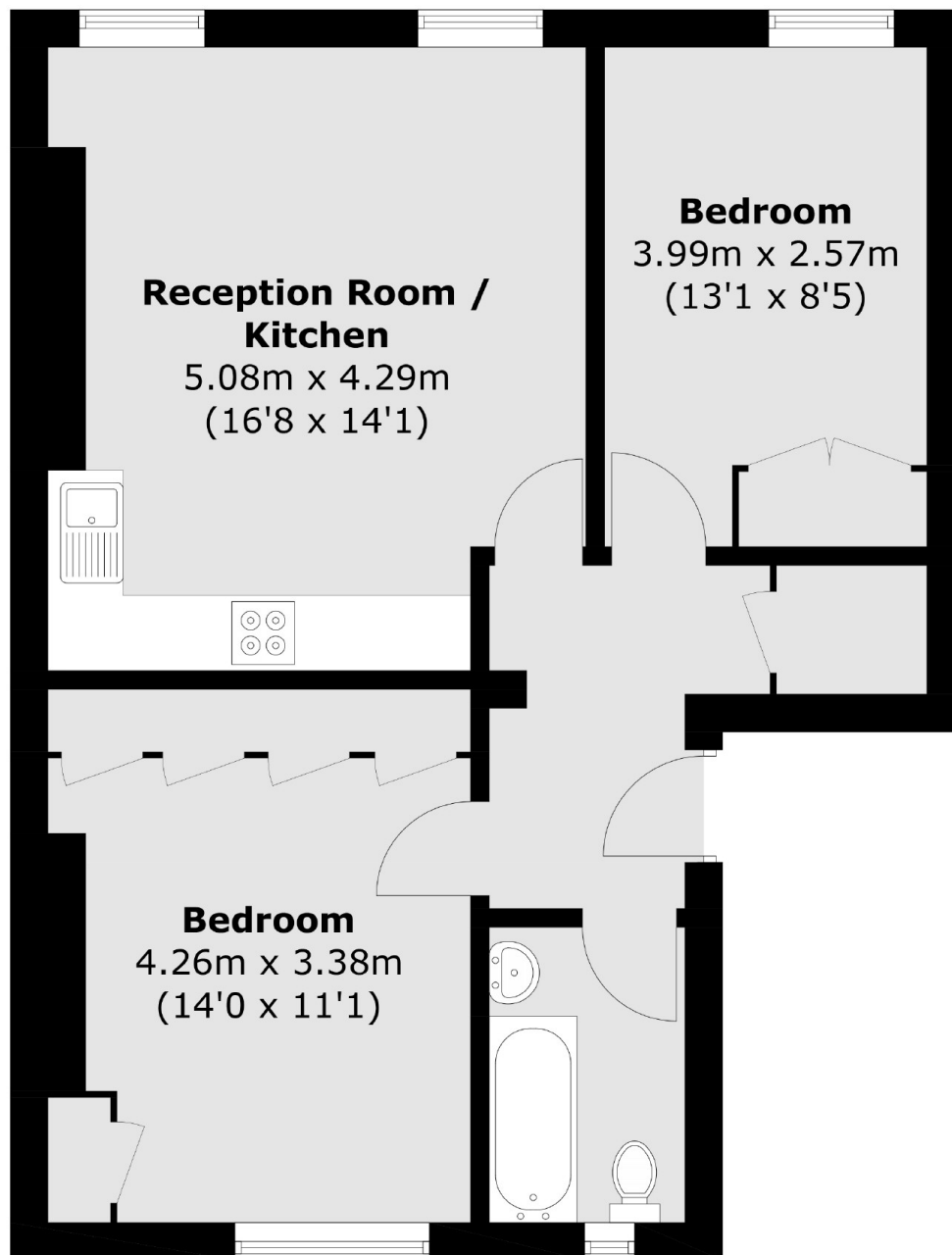
A two double bedroom period apartment at approximately 622 sq.ft in the heart of Kentish Town. The apartment has an open plan kitchen / living room with high ceilings and sash windows allowing lots of natural light.

Wolsey Mews is centrally located moments from the heart of Kentish Town off one of the area's most sought-after roads. The green open spaces of Hampstead Heath and Primrose Hill are also just a short walk away, as well as excellent transport links (Kentish Town Underground, Overground and Thameslink).

Features

- Two Double Bedrooms
- Open Plan Kitchen/Living
- Great Location
- Long Lease
- Built In Storage
- Good Transport Links

Wolsey Mews, London, NW5



Total area (approx.): 57.8 sq. m (622.1 sq. ft)