



**Holmes Road, NW5**

**£3,000** Per week

**Dexters**



## Holmes Road, NW5

A stunning four bedroom new build Penthouse in Kentish Town with direct views over London's skyline. The apartment has been finished to a high standard boasting four spacious bedrooms all with en-suites, a large open reception room including a stylish kitchen plus an impressive triple aspect terrace with fabulous views over London.

The unique property boasts an abundance of natural light with meticulous refurbishment throughout including parquet flooring, a cast iron feature staircase and quality fixtures and fittings.

On the top floor is a large stylish high-specification kitchen with a generous open plan living area and access to one of two large wrap around balconies, perfect for entertaining. A bespoke iron staircase leads down to a spacious hall plus four spacious bedrooms all en-suite bathrooms plus access to the second balcony.

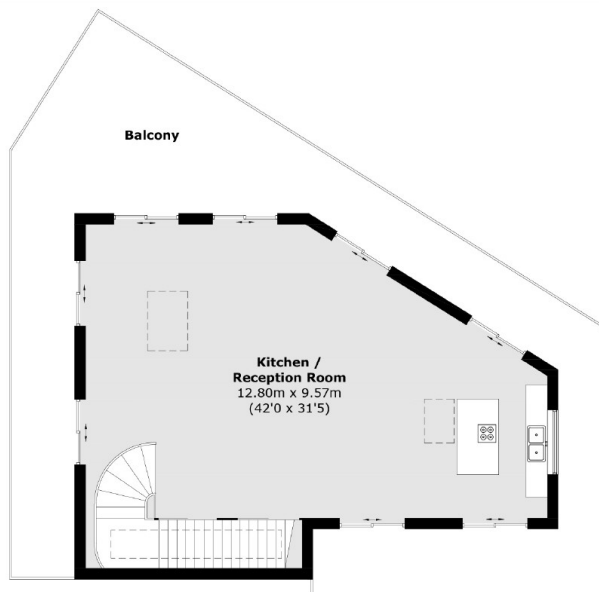
Holmes Road is located within easy reach of the Northern line via Kentish Town Station as well as being in close proximity to the local amenities and open spaces of Regents Park and Hampstead Heath.

### Features

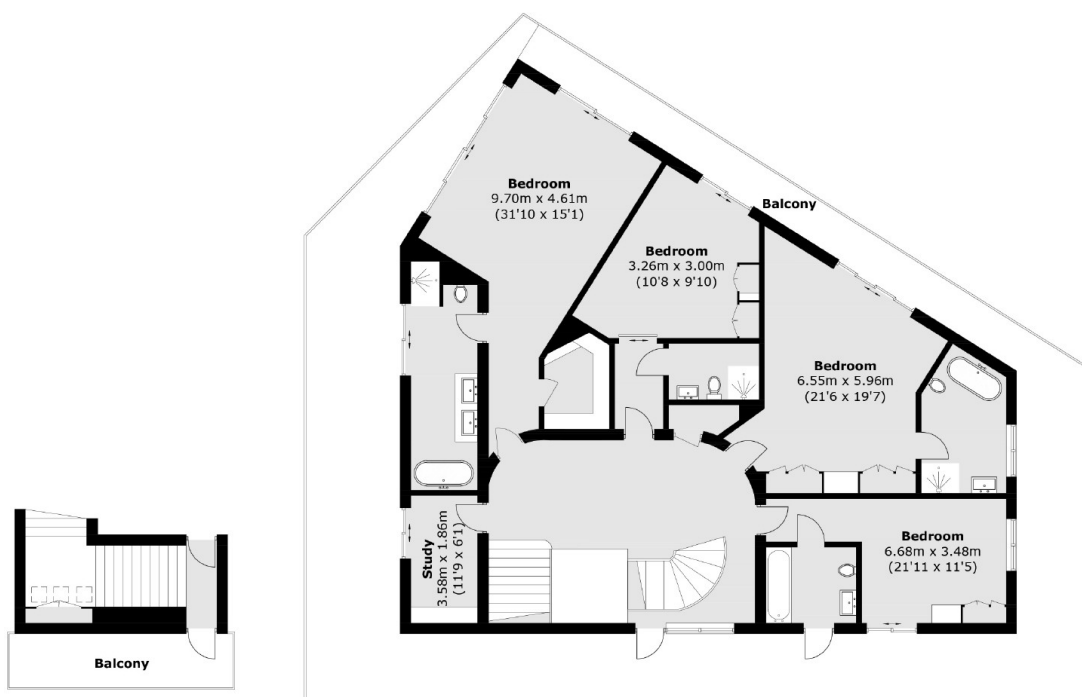
- Penthouse
- Four Bedrooms
- Concierge
- Large Balcony
- 3,000+ Sq Ft
- Modern Design



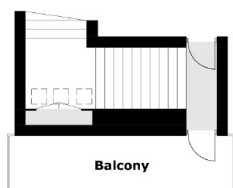
# Holmes Road, London, NW5



**Sixth Floor**



**Fifth Floor**



**Fourth Floor**

Total area (approx.): 302.8 sq. m (3,259.2 sq. ft)  
Balcony area: 207.8 sq. m (2,236.7 sq. ft)