



## Queens Crescent, NW5

£2,500,000

This stunning Victorian six bedroom house has been finished to an excellent standard throughout. At approximately 2,767 sq.ft, the house offers remarkable entertaining spaces as well as impressive high ceilings, a private west facing garden and two roof terraces.

Queens Crescent is in a quiet cul-de-sac, with nearby transport links including the underground stations of Chalk Farm and Belsize Park (Northern line). Close to the green open spaces of Primrose Hill and the shops, cafes, bars and restaurants of Belsize Park & Camden Town.

### Features

- Six Bedrooms
- Two Reception Rooms
- Freehold
- Great Condition
- West Facing Garden
- Roof Terrace



## Queens Crescent, NW5

The ground floor features a modern kitchen, a spacious reception room, and a separate dining area with sliding doors onto a west facing garden.

The lower ground floor includes three double bedrooms, a WC and a separate shower room, with two bedrooms opening onto the garden.

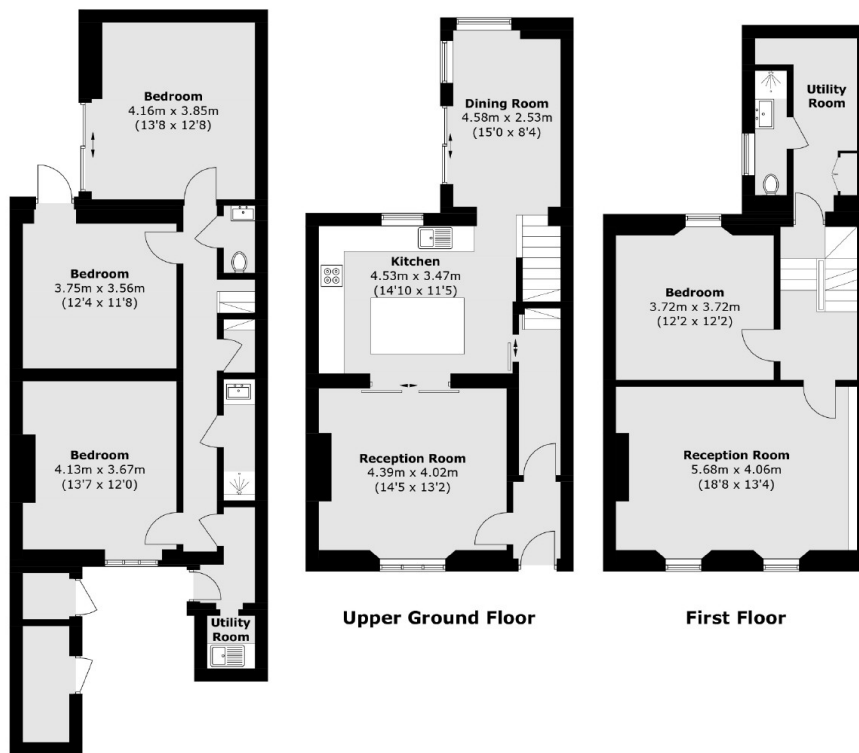
On the first floor, there is a second reception room with large windows and period features, a utility room, and a double bedroom.

The main bedroom has beautiful wood flooring, built in cupboards and large bathroom.

On the top floor there is an additional bedroom with bi folding doors leading out onto the second roof terrace.



# Queens Crescent, London, NW5



Total area (approx.): 257.1 sq. m (2,767.5 sq. ft)  
(Including External Cupboards / Excluding Eaves)  
Terrace / Balcony: 14.3 sq. m (153.9 sq. ft)

## Dexters

Kentish Town & Camden  
274 Kentish Town Road  
London  
NW5 2AA  
Sales  
020 7483 6390

Energy Rating: C. We aim to make our particulars both accurate and reliable. However they are not guaranteed; nor do they form part of an offer or contract. If you require clarification on any points then please contact us, especially if you're traveling some distance to view. Please note that appliances and heating systems have not been tested and therefore no warranties can be given as to their good working order.

**RICS** Regulated  
Estate Agent  
and Letting Agent

dexters.co.uk