



Gaisford Street, NW5

£950,000

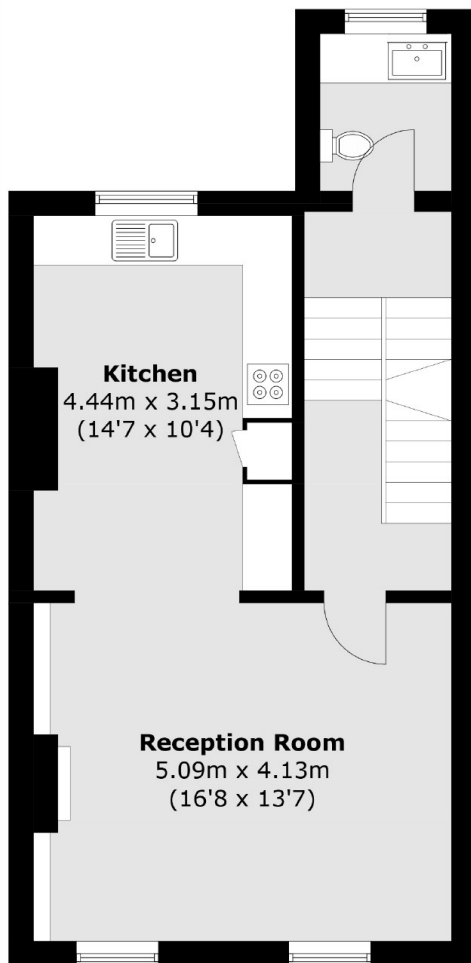
A stunning two double bedroom split level apartment with wood floors and impressive high-ceilings throughout. The flat has a modern, open plan kitchen/living room and access to a private terrace.

Gaisford Street is situated off Kentish Town high street, with access to independent cafés, restaurants, pubs and bars. Local transport links include Kentish Town station (Northern line & National Rail) and Kentish Town West (Overground).

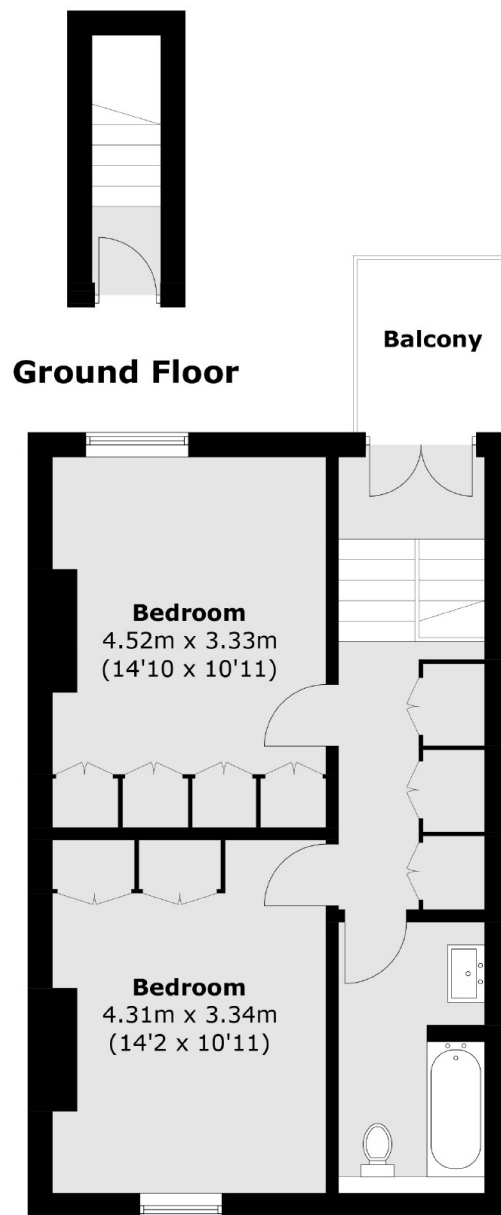
Features

- Two Double Bedrooms
- Leasehold
- Split-Level
- Great Condition
- Private Terrace
- Two Bathrooms

Gaisford Street, London, NW5



First Floor



Second Floor

Total area (approx.): 98.6 sq. m (1,061.3 sq. ft)
Balcony: 3.8 sq. m (40.9 sq. ft)