



Queens Crescent, NW5

£390,000

This top floor two double bedroom apartment is approximately 537 sq.ft, has an open plan kitchen / reception room and a private south facing balcony.

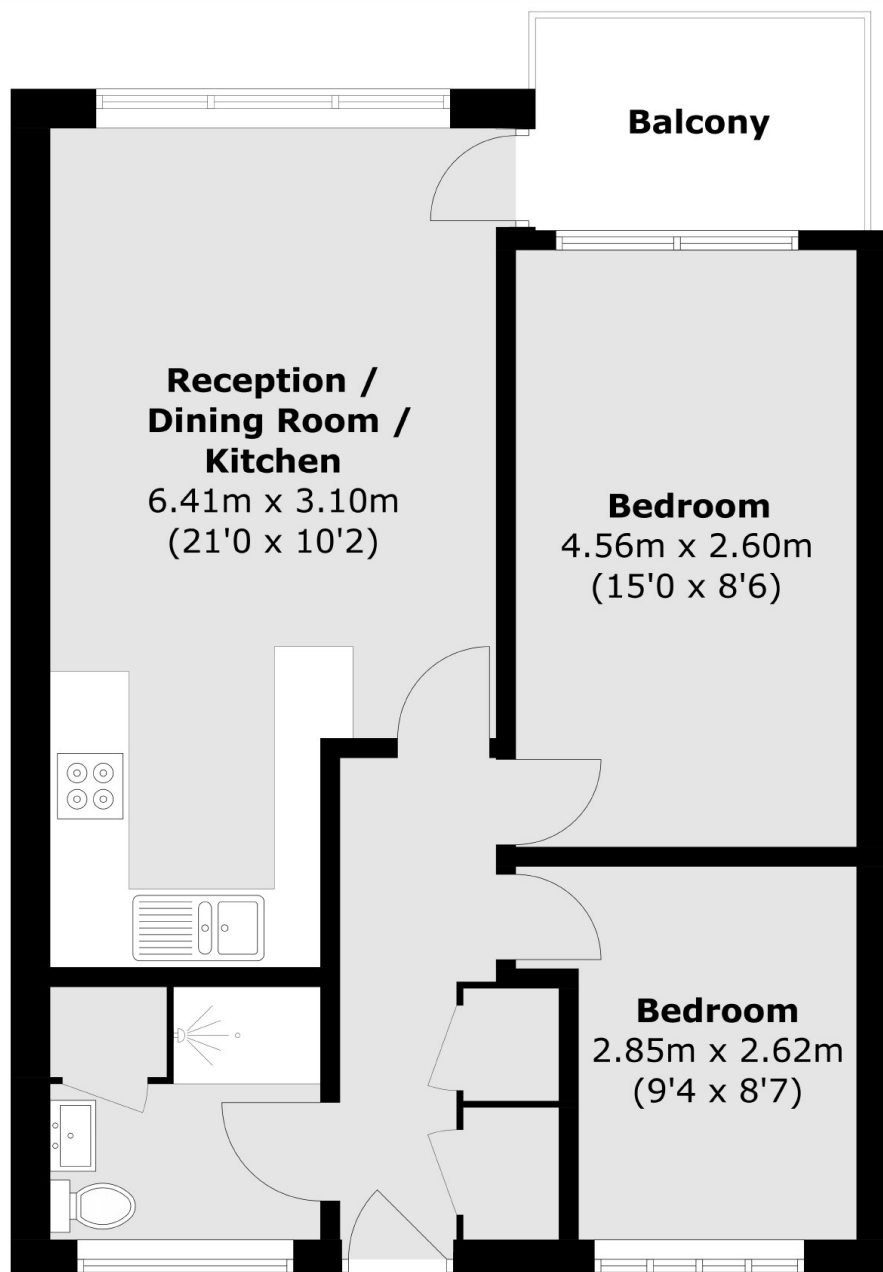
Set within a popular purpose built block, conveniently located close to super cross London transport links and local shops & amenities.

Camden and Kentish Town are within a short distance, as well as the green open spaces of Hampstead Heath and Primrose Hill.

Features

- Two Bedrooms
- Private South Facing Balcony
- Long Leasehold
- Good Condition
- One Bathroom
- Lots Of Built In Storage

Queens Crescent,
London, NW5



Total area (approx.): 49.9 sq. m (537.1 sq. ft)
Balcony: 4.1 sq. m (44.1 sq. ft)

Dexters

Kentish Town & Camden
274 Kentish Town Road
London
NW5 2AA
Sales
020 7483 6390

Energy Rating: D. We aim to make our particulars both accurate and reliable. However they are not guaranteed; nor do they form part of an offer or contract. If you require clarification on any points then please contact us, especially if you're traveling some distance to view. Please note that appliances and heating systems have not been tested and therefore no warranties can be given as to their good working order.

 **RICS** | Regulated
Estate Agent
and Letting Agent

[dexters.co.uk](https://www.dexters.co.uk)