

Malden Road, NW5

£550,000

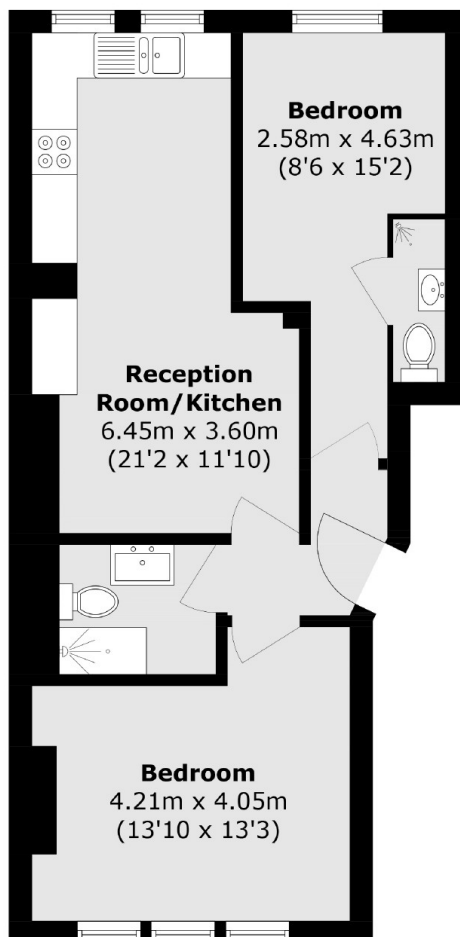
At approximately 607 sq.ft is this two double bedroom, two bathroom period apartment on the raised ground floor. The apartment has an open plan kitchen / reception room and in good condition throughout.

Malden Road is conveniently located off Prince of Wales Road, nearest tube station being Chalk Farm (Northern line) and close to Kentish Town West overground station, local bus services, shops & cafes.

Features

- Two Bedrooms
- Two Bathrooms
- Chain Free
- Leasehold
- Raised Ground Floor
- Great Location

Malden Road, London, NW5



Total area (approx.): 56.6 sq. m (609.2 sq. ft)