



Fortess Road, NW5

£1,950,000

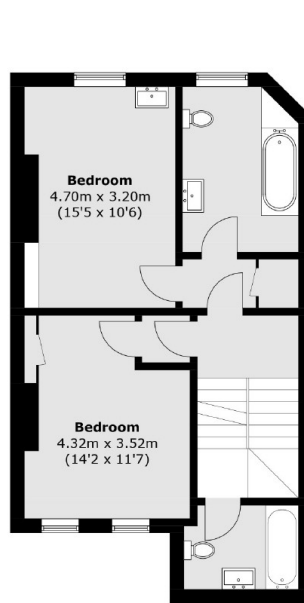
This wonderful six double bedroom end of terrace house at approximately 2,930 sq ft is offered on a chain free basis. The house has a large south facing garden and two reception rooms.

Fortess Road is well situated for the many popular local bars and pubs of Kentish Town and Tufnell Park, as well as the diverse range of shops along the High Street. Kentish Town (Northern Line and Thameslink) and Tufnell Park Station are within close proximity as well as beautiful Hampstead Heath.

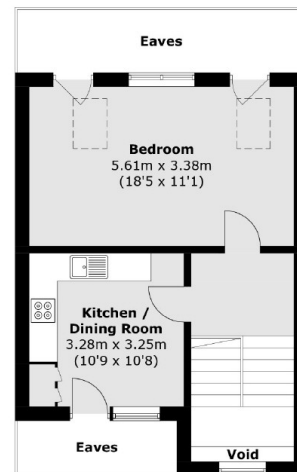
Features

- Six Bedrooms
- Chain Free
- Large Garden
- Freehold
- Two Reception Rooms
- Great Location

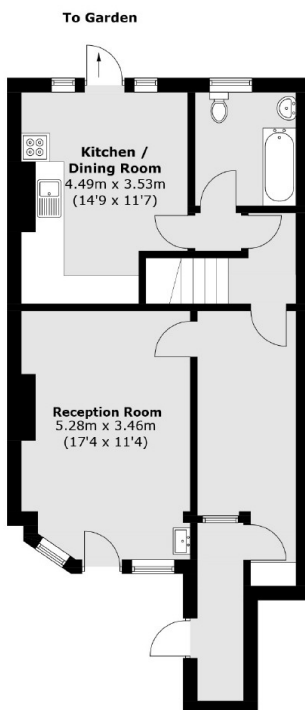
Fortess Road, London, NW5



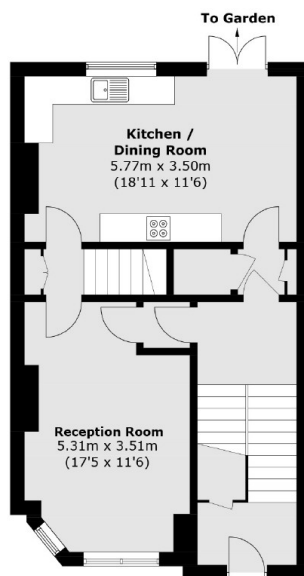
Second Floor



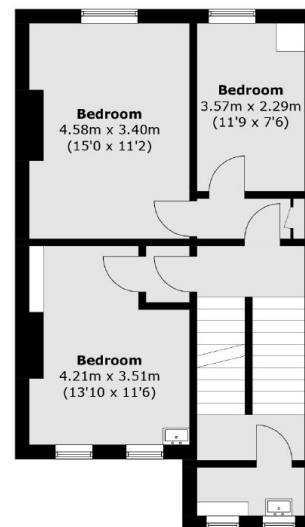
Third Floor



Lower Ground Floor



Upper Ground Floor



First Floor

Total area (approx.): 272.3 sq. m (2,930.7 sq. ft)
(Excluding Void / Eaves)