

Royal College Street, NW1 £1,200,000

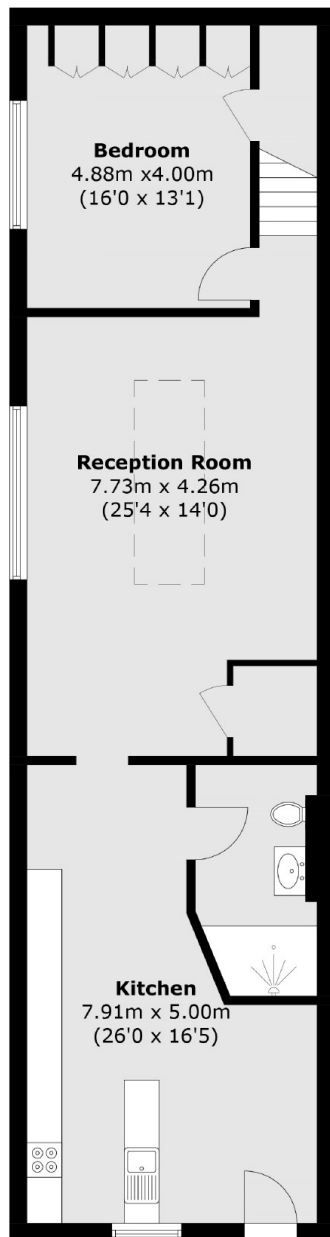
At approximately 1,333 sq.ft, is this stunning two double bedroom maisonette featuring double height ceilings in the reception room, an original wood burner, and its own private entrance.

Royal College Street is ideally placed just 0.1 miles away from Camden Road Station (Overground) and just 0.3 miles to Camden Town Station. Camden is one of London's most vibrant areas and home to the famous Camden Market.

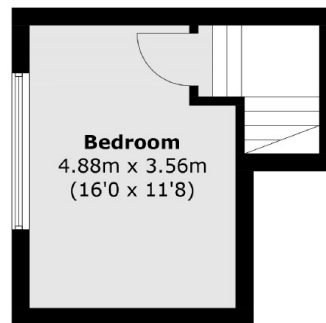
Features

- Two Double Bedrooms
- Double Height Ceilings
- Amazing Condition
- Built In Sound System
- Share Of Freehold
- Private Entrance

Royal College Street, London, NW1



Ground Floor



First Floor

Total area (approx.): 123.9 sq. m (1333.7 sq. ft)