



## Jeffreys Street, NW1

### £1,175,000

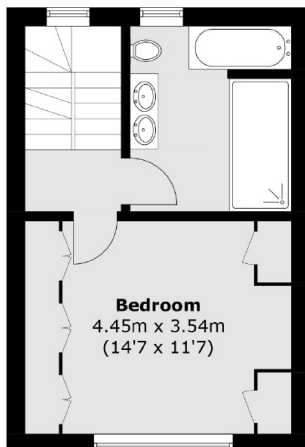
On one of the most sought after roads in Camden is this stunning mid-terrace, three double bedroom freehold townhouse with two rear outdoor terrace areas and an outdoor, ground floor patio area.

Jeffreys Street is a pretty one way street with no through access at one end, providing a peaceful haven whilst within easy reach of the many amenities nearby. Both Camden Road (Overground) and Camden Town (Northern line) stations are a short walk away.

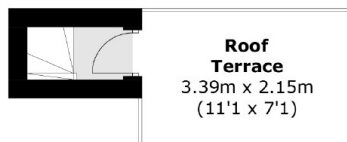
### Features

- Three Double Bedrooms
- Chain Free
- Quiet Street
- Patio Garden
- Fantastic Transport Links
- Roof Terrace

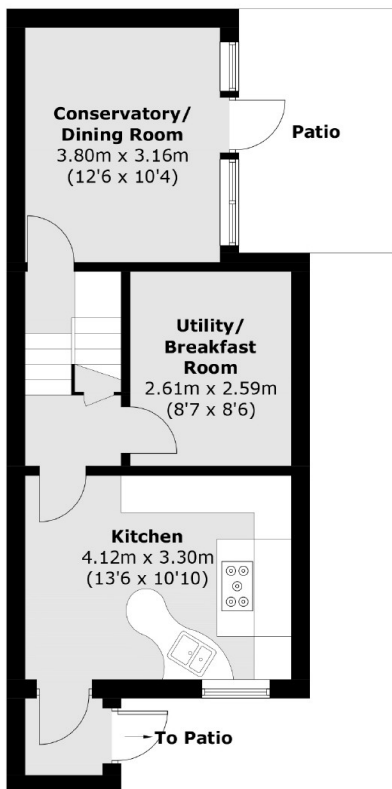
# Jeffreys Street, London, NW1



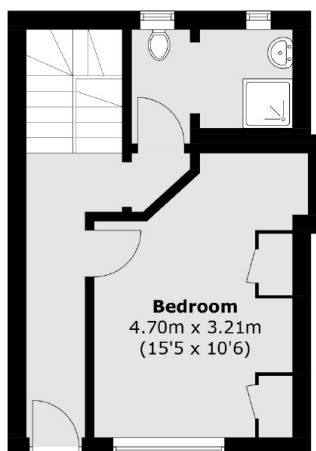
**Second Floor**



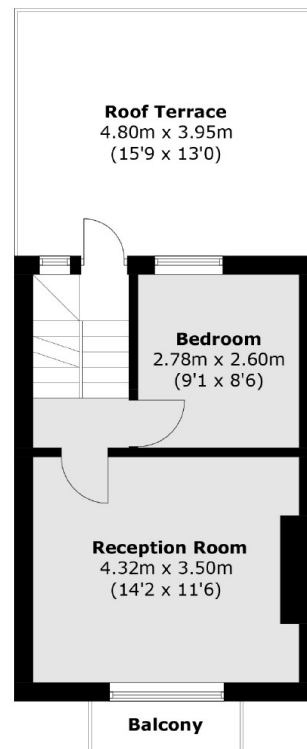
**Third Floor**



**Lower Ground Floor**



**Ground Floor**



**First Floor**

Total area (approx.): 130.0 sq. m (1,399.3 sq. ft)  
Balcony / Terrace area: 28.2 sq. m (303.5 sq. ft)