



Dunollie Road, NW5

£1,100,000

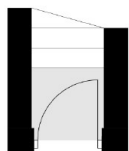
A well-presented split-level maisonette set over two floors of this end terrace Victorian house. The property has two double bedrooms, an upper mezzanine/study, a large living room, a modern fitted kitchen, original wood flooring and a wealth of period features.

Ideally located within this highly sought after residential enclave with good access to the many shops, pubs and restaurants of Tufnell Park and Kentish Town with excellent transport routes to the City, West End and St.Pancras International.

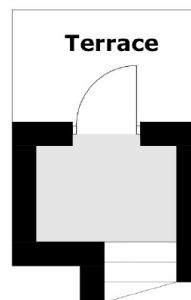
Features

- Victorian Conversion
- Upper Floor Maisonette
- Two Double Bedrooms
- Two Bathrooms
- High Ceilings
- Share of Freehold

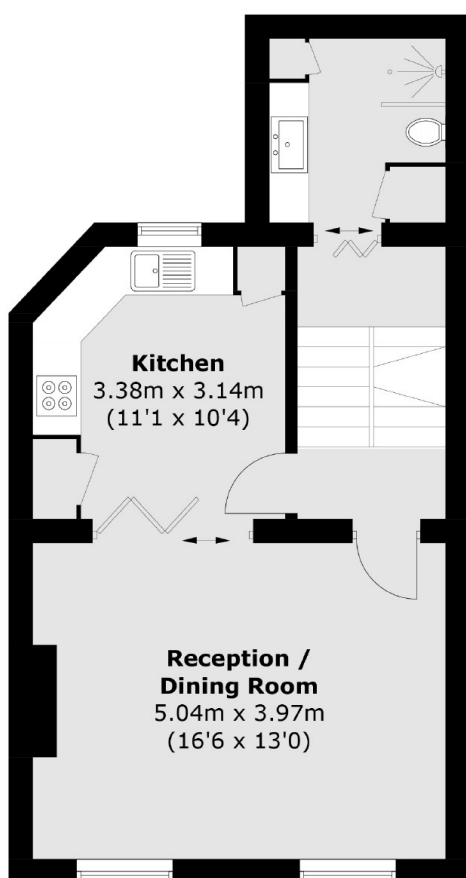
Dunollie Road, London, NW5



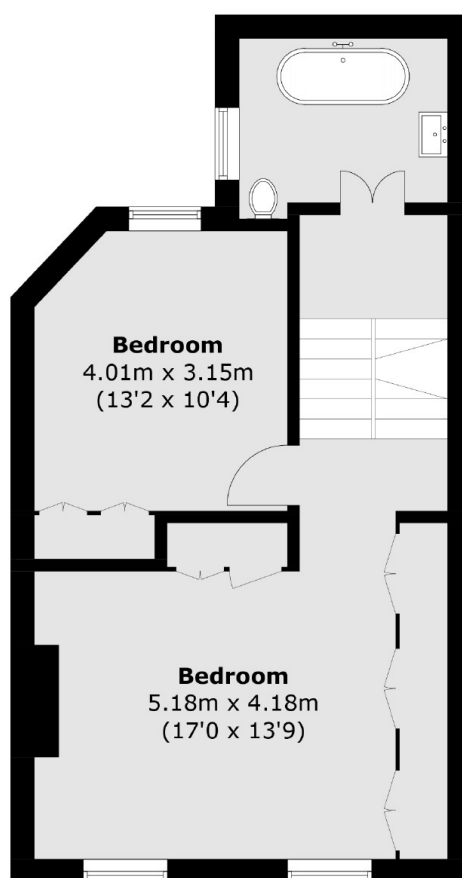
Ground Floor



Third Floor



First Floor



Second Floor

Total area (approx.): 95.1 sq. m (1023.4 sq. ft)