



Malden Place, NW5

£1,225,000

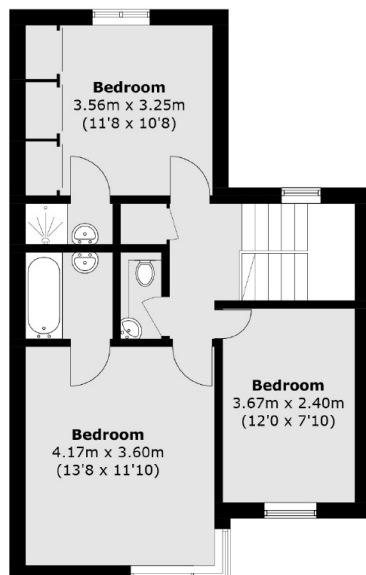
At approximately 1,200 sq.ft is this beautiful three bedroom freehold house, situated on one of the most sought after roads in Kentish Town. The house is set over two floors, with two reception rooms, large windows throughout and a lovely private garden.

Malden Place is within easy reach of Belsize Park & Gospel Oak stations. There are an excellent array of eclectic shops, bars and restaurants, as well the wide spaces of Hampstead Heath, within a few minutes walk.

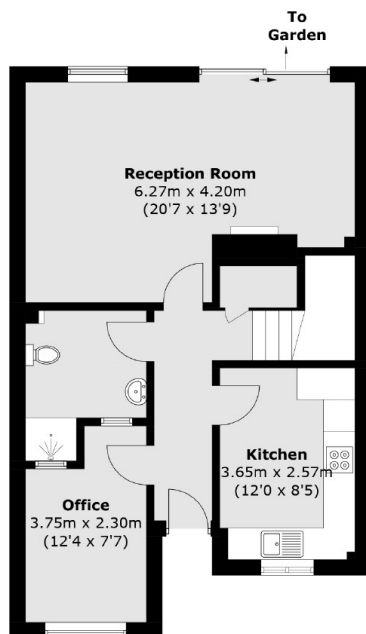
Features

- Three Bedrooms
- Three Bathrooms
- Private Garden
- Freehold
- Chain Free
- Great Location

Malden Place, London, NW5



First Floor



Ground Floor

Total area (approx.): 111.5 sq. m (1,200.1 sq. ft)