



## Bayham Place, NW1

£465,000

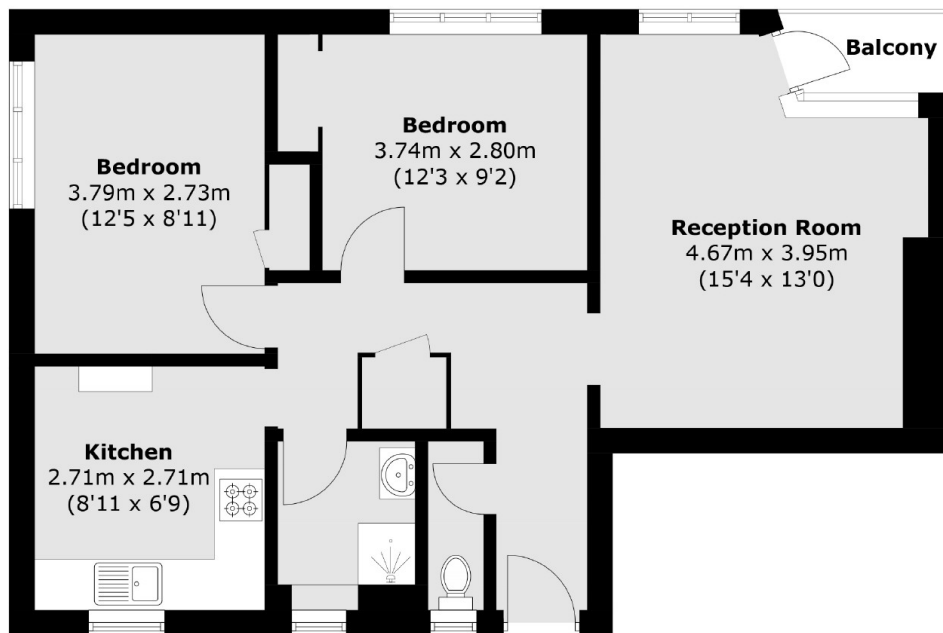
At approximately 666 sq.ft is this two double bedroom apartment with spectacular views across London. The flat has been renovated to an excellent standard throughout, with well-proportioned rooms and a balcony that looks towards the city.

Bayham Place offers a great location to the shops, bars and restaurants of Camden and King's Cross. The green open space of Regent's Park is also moments away. Mornington Crescent Underground Station (Northern Line) is close by for excellent links into the city.

### Features

- Two Bedrooms
- Private Secure Storage Shed
- Amazing Views
- Chain Free
- Leasehold
- Gated Development

# Bayham Place, London, NW1



Total area (approx.): 61.9 sq. m (666.3 sq. ft)  
Balcony: 1.8 sq. m (19.4 sq. ft)

## Dexters

Kentish Town & Camden  
274 Kentish Town Road  
London  
NW5 2AA  
Sales  
020 7483 6390

Energy Rating: D. We aim to make our particulars both accurate and reliable. However they are not guaranteed; nor do they form part of an offer or contract. If you require clarification on any points then please contact us, especially if you're traveling some distance to view. Please note that appliances and heating systems have not been tested and therefore no warranties can be given as to their good working order.

 **RICS** | Regulated  
Estate Agent  
and Letting Agent

[dexters.co.uk](https://www.dexters.co.uk)