



Bayham Place, NW1

£500,000

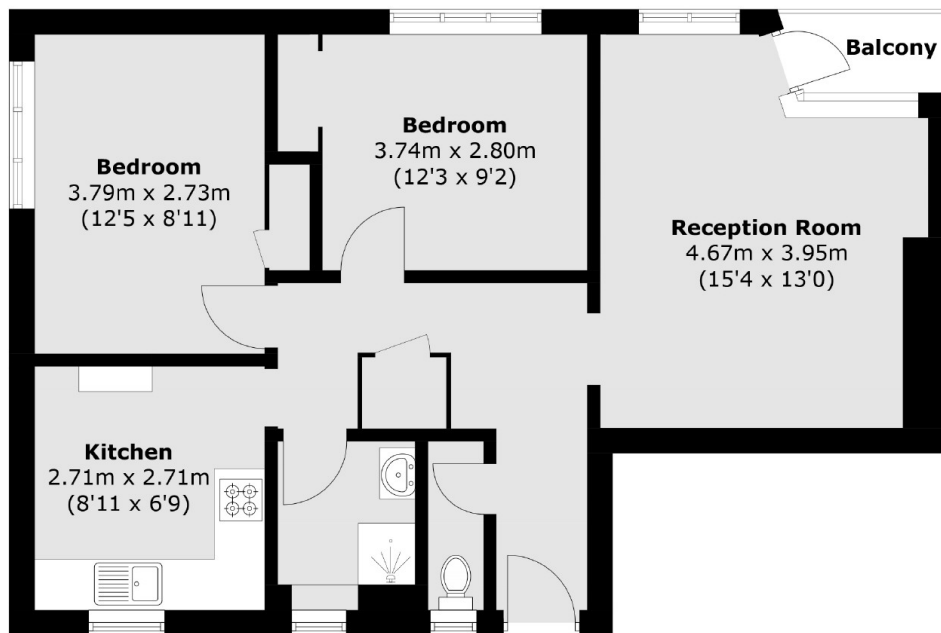
At approximately 666 sq.ft is this two double bedroom apartment with spectacular views across London. The flat has been renovated to an excellent standard throughout, with well-proportioned rooms and a balcony that looks towards the city.

Bayham Place offers a great location to the shops, bars and restaurants of Camden and King's Cross. The green open space of Regent's Park is also moments away. Mornington Crescent Underground Station (Northern Line) is close by for excellent links into the city.

Features

- Two Bedrooms
- Private Secure Storage Shed
- Amazing Views
- Chain Free
- Leasehold
- Gated Development

Bayham Place, London, NW1



Total area (approx.): 61.9 sq. m (666.3 sq. ft)
Balcony: 1.8 sq. m (19.4 sq. ft)