



Grafton Terrace, NW5

£900,000

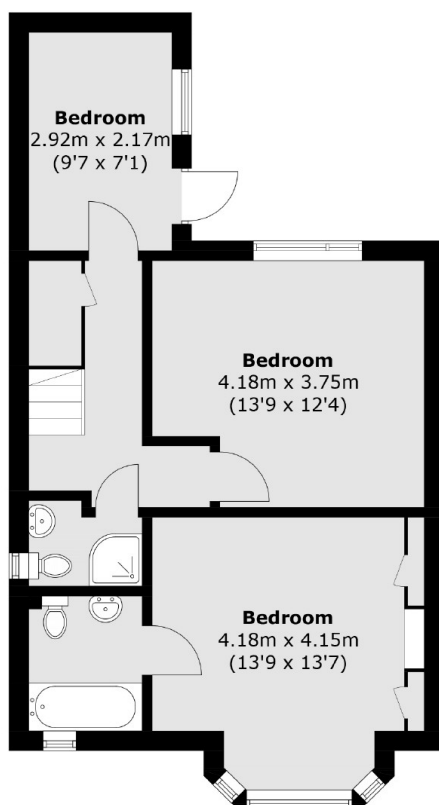
This stunning four bedroom duplex apartment spans approximately 1,040 sq.ft in size. The property has been finished to an excellent standard throughout, With lovely wood floors, a separate kitchen and a beautiful private courtyard.

Grafton Terrace is equidistant between Belsize Park & Chalk Farm underground (Northern line) and a short distance to Kentish Town overground. The property is situated in a popular residential area with an array of local amenities and fashionable shops all close by.

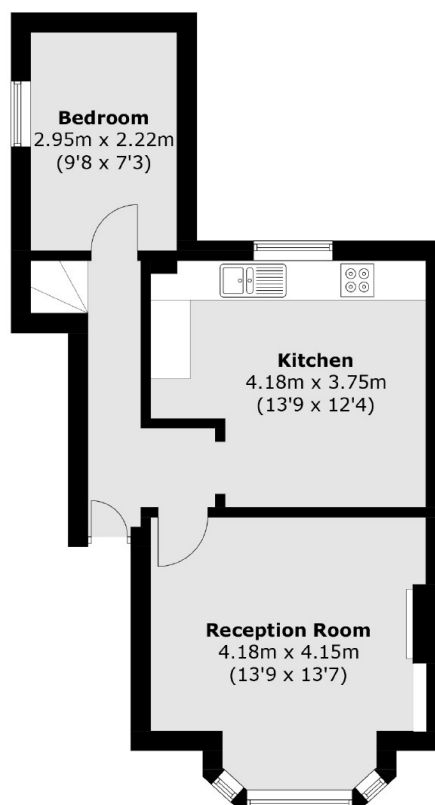
Features

- Four Bedrooms
- Two Bathrooms
- Chain Free
- Share of Freehold
- Private Courtyard
- Great Location

Grafton Terrace, London, NW5



Basement



Ground Floor

Total area (approx.): 96.7 sq. m (1,040.8 sq. ft)