



Caversham Road, NW5

£600,000

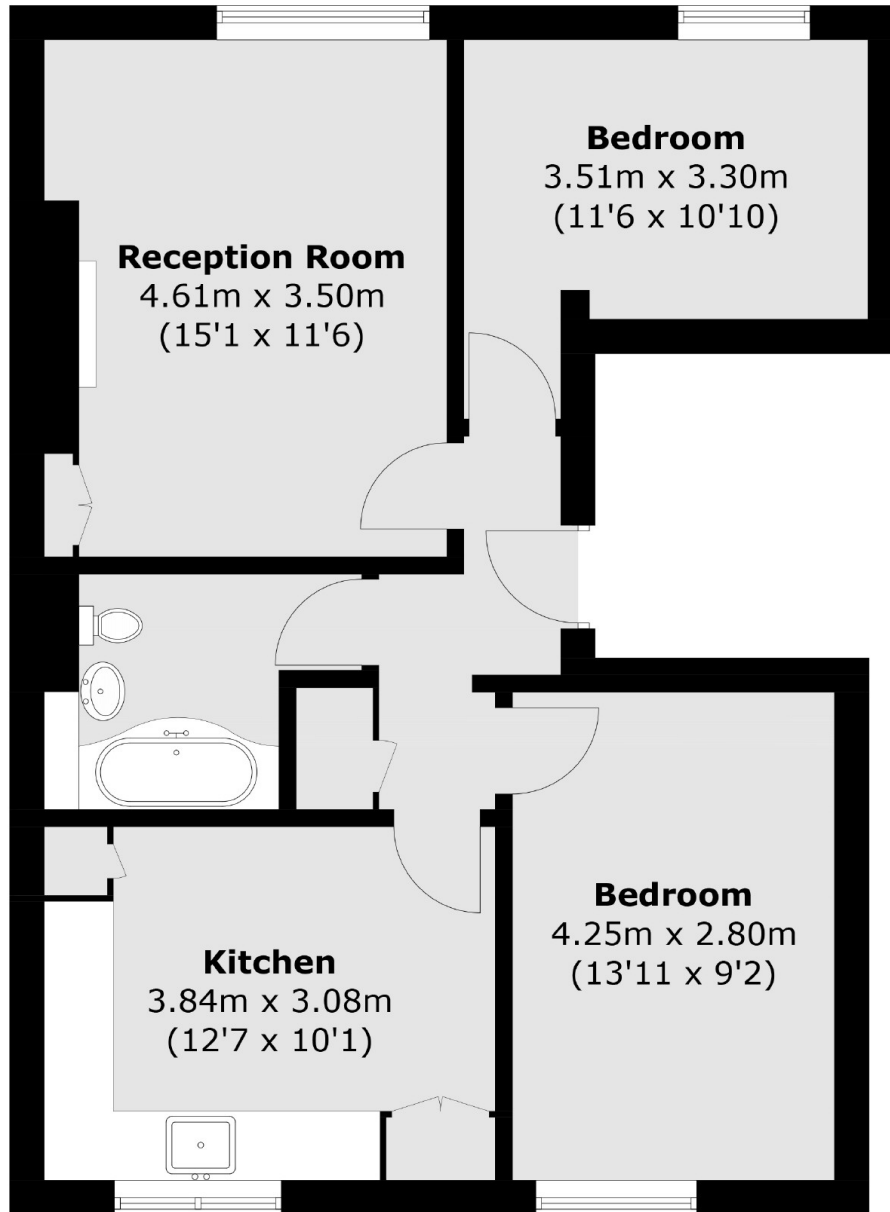
In the heart of Kentish Town is this spacious two double bedroom apartment spanning approximately 660 sq.ft. The property is on the first floor and has a separate kitchen, high ceilings throughout and large windows that let in lots of natural light.

Caversham Road is centrally located on one of the area's most sought-after roads. The green open spaces of Hampstead Heath and Primrose Hill are just a short distance away, as well as excellent transport links (Kentish Town Underground, Overground and Thameslink).

Features

- Two Bedrooms
- One Bathroom
- Leasehold
- Great Condition
- Chain Free
- Fantastic Location

Caversham Road,
London, NW5



Total area (approx.): 61.3 sq. m (659.8 sq. ft)