



Cliff Road, NW1

£350,000

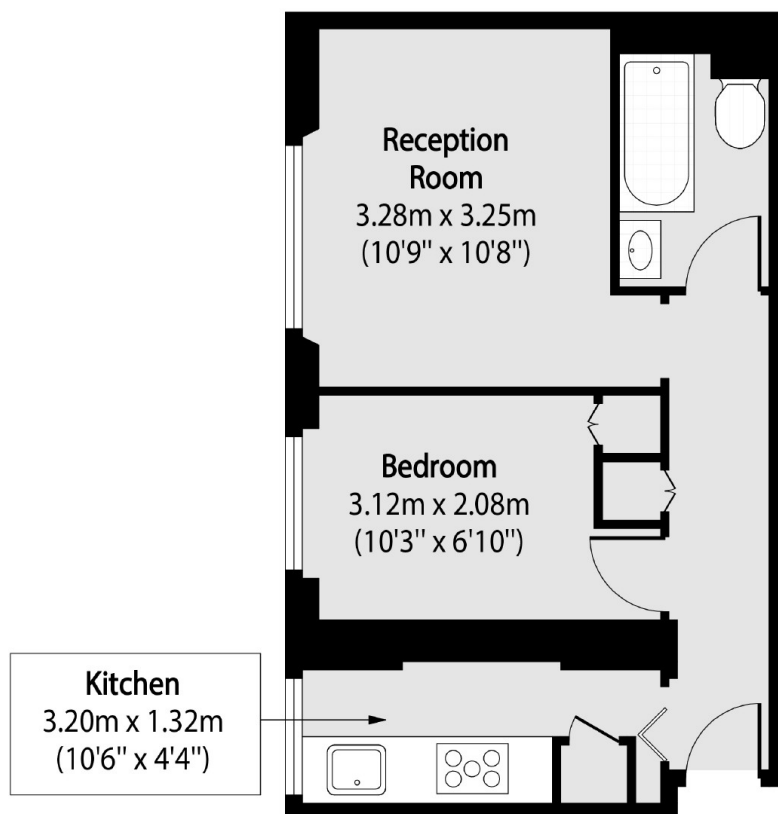
This one bedroom apartment is in excellent condition throughout. The apartment set on the second floor within this gated development, has underfloor heating throughout, brand new double glazed casement and sash windows letting in lots of natural light.

The property is located just a short distance from the vibrant high street of Kentish Town (approximately 0.5 miles) and Kentish Town underground station (approximately 0.7 miles). St Pancras International station is a short train journey from Kentish Town station (approximately 17 minutes), a short car ride to St Pancras (approximately 11 minutes) and a short distance from Camden Town.

Features

- Excellent Condition
- Chain Free
- Gated Development
- Allocated Parking Space
- Second Floor
- Bright Apartment

Cliff Road, London, NW1



Total area (approx): 29.54 sq m (318 sq. ft)