



Oval Road, NW1

£1,600 Per week

A contemporary three bedroom, two bathroom apartment with sleek, stylish interior and private balcony in the iconic Latitude House development close to Regents Park.

Oval Road is well located for Camden Town and local amenities including Camden Lock, Camden Market, Regent's Canal and Primrose Hill.

Features

- Contemporary Apartment
- Three Bedrooms
- Two Bathrooms
- Private Balcony
- Lift Access
- Local Canal & Park



Oval Road, NW1

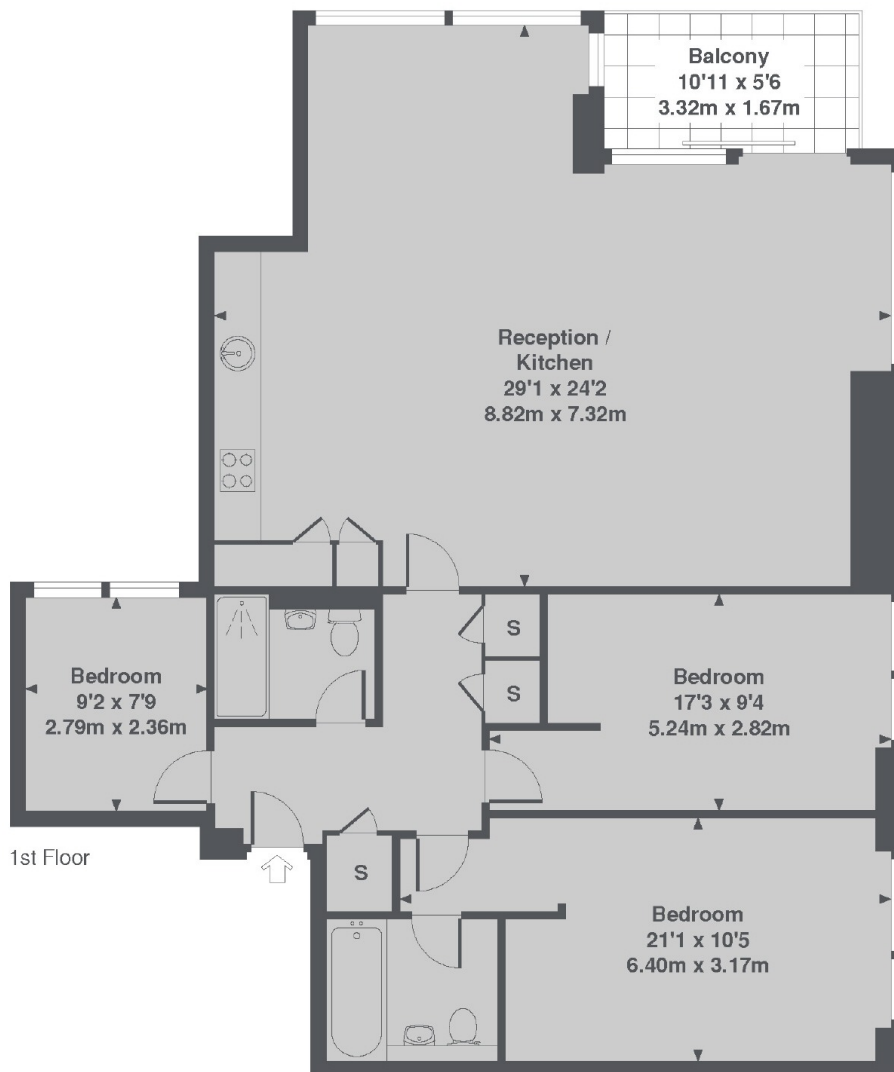
In a recently completed development and with just under 1,200 sq ft of floor space, this new apartment offers comfortable modern living in the heart of Camden.

The expansive open-plan reception room featuring a state-of-the-art kitchen, dining and lounge areas is ideal for entertaining guests or family gatherings.

Two good-sized double bedrooms and a third smaller room (that could be used as an office, nursery or guest room) along with two full family bathrooms gives great flexibility and the private covered balcony offers an additional usable space.



Oval Road, London, NW1



Latitude House, Oval Road, NW1
Total Approx. Floor area 1197 Sq. Ft. (111.2 Sq. M.)