



Camden Mews, NW1

£1,269 Per week

An award winning four bedroom family home designed by renowned engineer, Max Fordham OBE. Set in a quiet cobbled mews the property boasts four double bedrooms, spacious open plan living area, secluded garden, two roof terraces, wood flooring and ample storage throughout.

Camden Mews is a quiet cobbled street renowned for its innovative architecture offering easy access to a vibrant array of shops restaurants, popular schools and gastro pubs of Kentish and Camden Town.

Features

- Architecturally Designed
- Passivhaus accredited
- Four Bedrooms
- Wooden Floors
- Two Bathrooms
- Private Roof Terraces



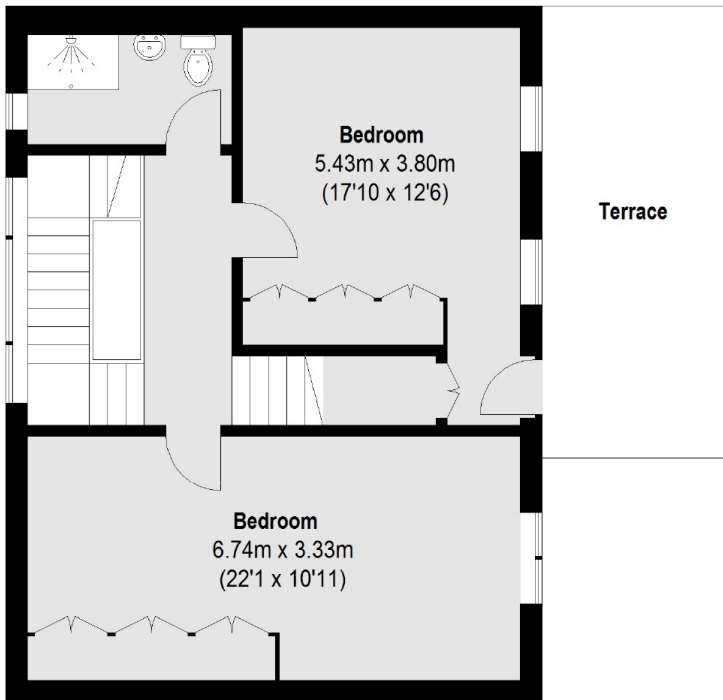
Camden Mews, NW1

The house has a functional and minimalist aesthetic hosting a large kitchen and dining room with floor-to-ceiling windows, white walls and a U-shaped kitchen with integrated cabinets and ample storage space.

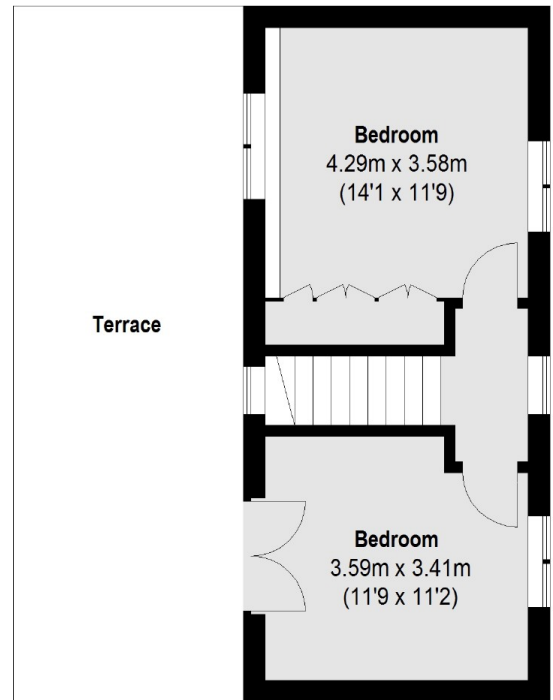
Upstairs, there are four bedrooms spread over the first and second levels, each of which has its own private terrace. On the top floor, two of the bedrooms also feature beamed ceilings that mirror the wooden panelling on the outside of the building.



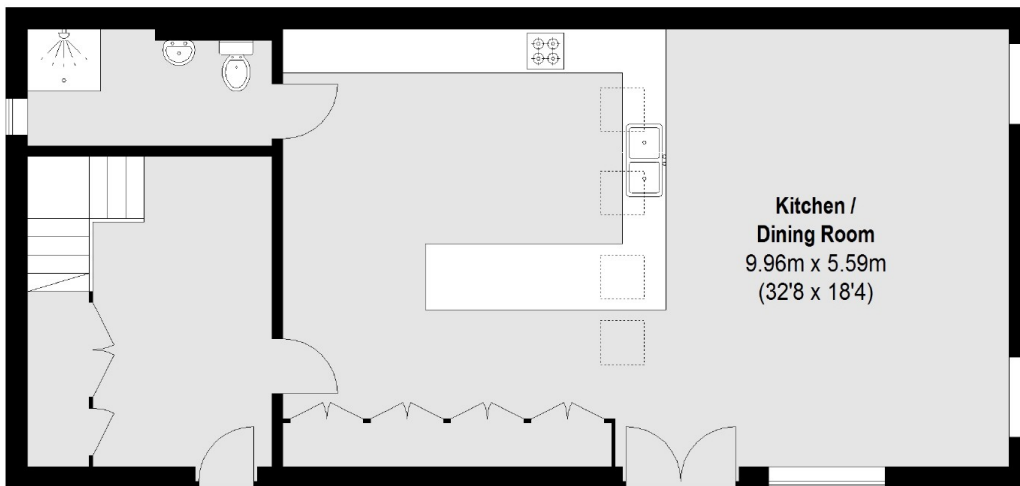
Camden Mews, London, NW1



First Floor



Second Floor



Ground Floor

Total area (approx.): 174.31 sq. m (1876 Sq. ft)
Terrace: 46.2 sq. m (497 Sq. ft)