



## Mornington Place, NW1

£750,000

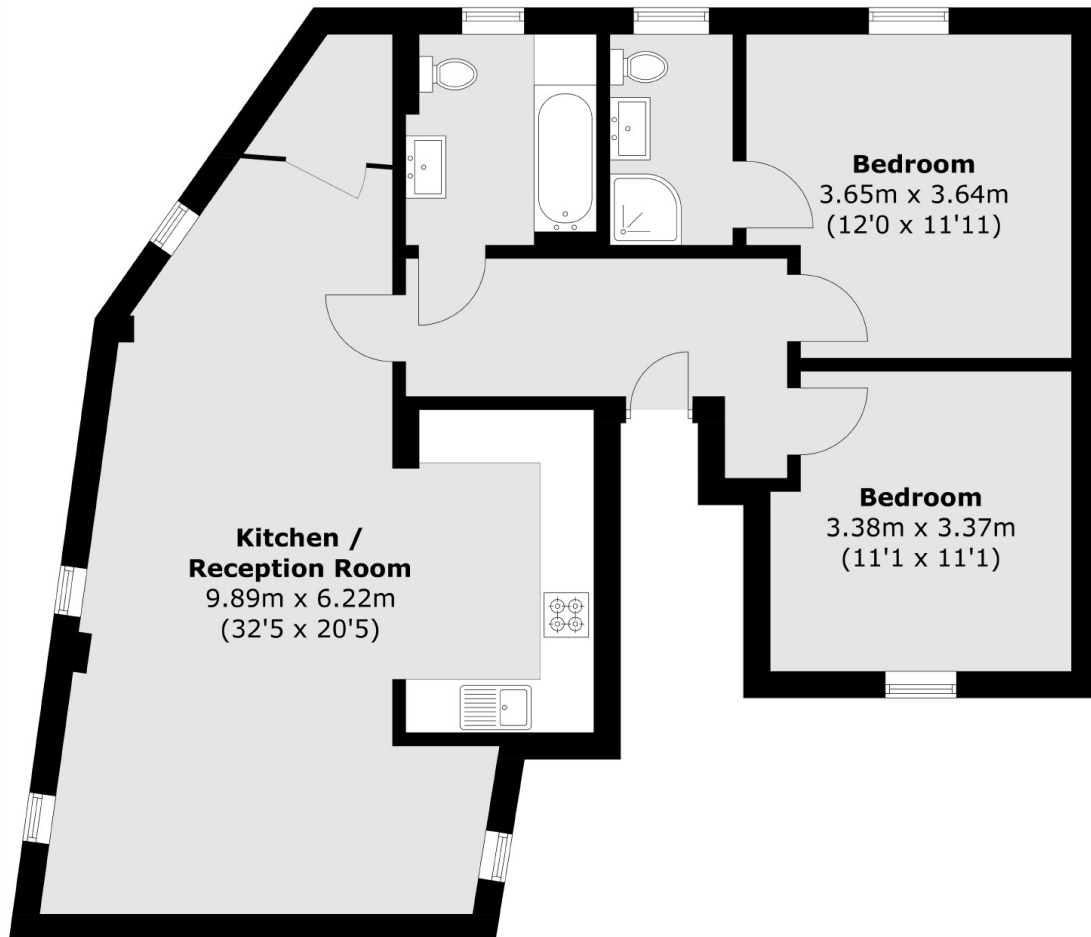
This two double bedroom, two bathroom apartment has an open plan kitchen/reception room, the apartment is in great condition throughout and is in walking distance to Primrose Hill.

Mornington Place is a quiet residential street perfectly located for the shops and restaurants of Camden Town, as well as Primrose Hill Village. The open spaces of Regent's Park are within easy walking distance, Mornington Crescent underground station (Northern Line) is 0.1 miles away.

### Features

- Two Bedrooms
- Two Bathrooms
- Leasehold
- Chain Free
- Great Condition
- Fantastic Location

# Mornington Place, London, NW1



Total area (approx.): 82.1 sq. m (883.7 sq. ft)