



Leverton Street, NW5

£1,250,000

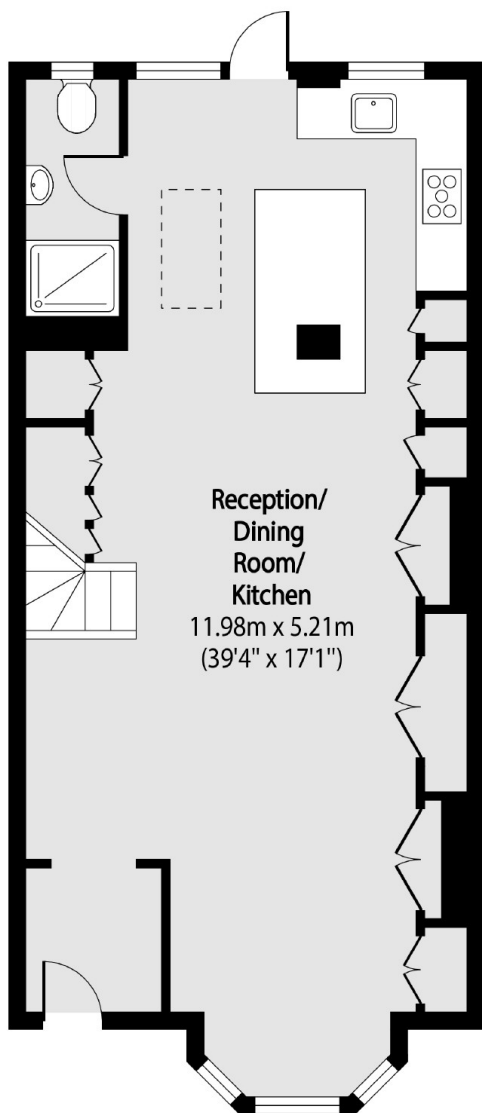
A beautifully presented three double bedroom split level maisonette with a private garden. The property has high ceilings throughout, a modern open plan kitchen / reception room and a private garden.

Leverton Street is a quiet residential street located moments from Kentish Town (Northern line & Thameslink) stations and the shops and amenities of Kentish Town High Street. In the catchment for Eleanor Palmer Primary School and the green open spaces of Hampstead Heath is also nearby.

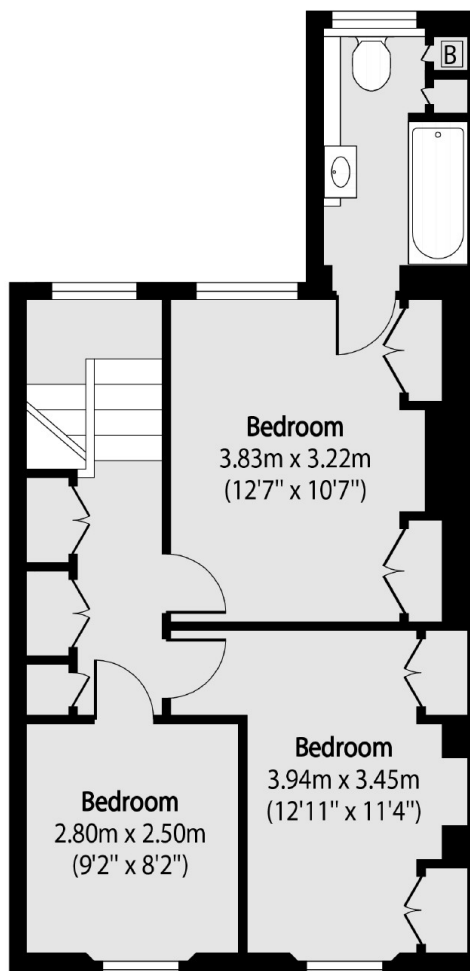
Features

- Three Bedrooms
- Two Bathrooms
- Private Garden
- Leasehold
- Private Entrance
- Great Condition

Leverton Street, London, NW5



Ground Floor



First Floor

Total area (approx): 104.82 sq m (1128 sq. ft)