



Mandela Street, NW1

£1,000,000

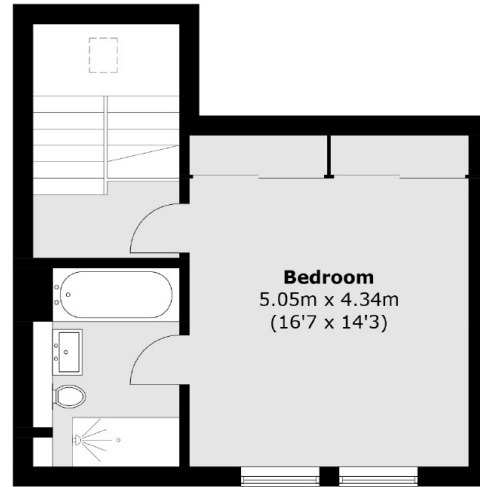
This unique and well presented two double bedroom and two bathroom Mews house is located in the heart of Camden Town. The property offers a spacious open plan kitchen/reception room with floor to ceiling windows and modern fitted appliances.

Located near the shops and cafes and green squares in the heart of Camden Town and within close proximity to Kings Cross offering numerous transport links on London's Underground lines and both National and International rail lines. The green open spaces of Regents Park and Primrose Hill are also nearby.

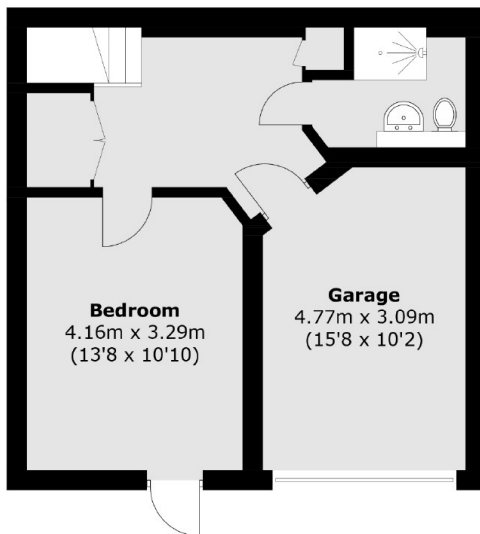
Features

- Two Bedrooms
- Two Bathrooms
- Freehold
- Chain Free
- Garage
- Fantastic Condition

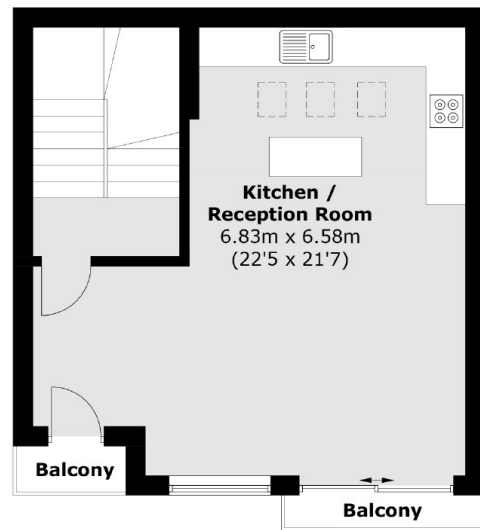
Mandela Street,
London, NW1



Second Floor



Ground Floor



First Floor

Total area (approx.): 126.6 sq. m (1362.6 sq. ft)
(Including Garage)

Balcony area (approx.): 2.7 sq. m (29.1 sq. ft)