



Camden Terrace, NW1

£725,000

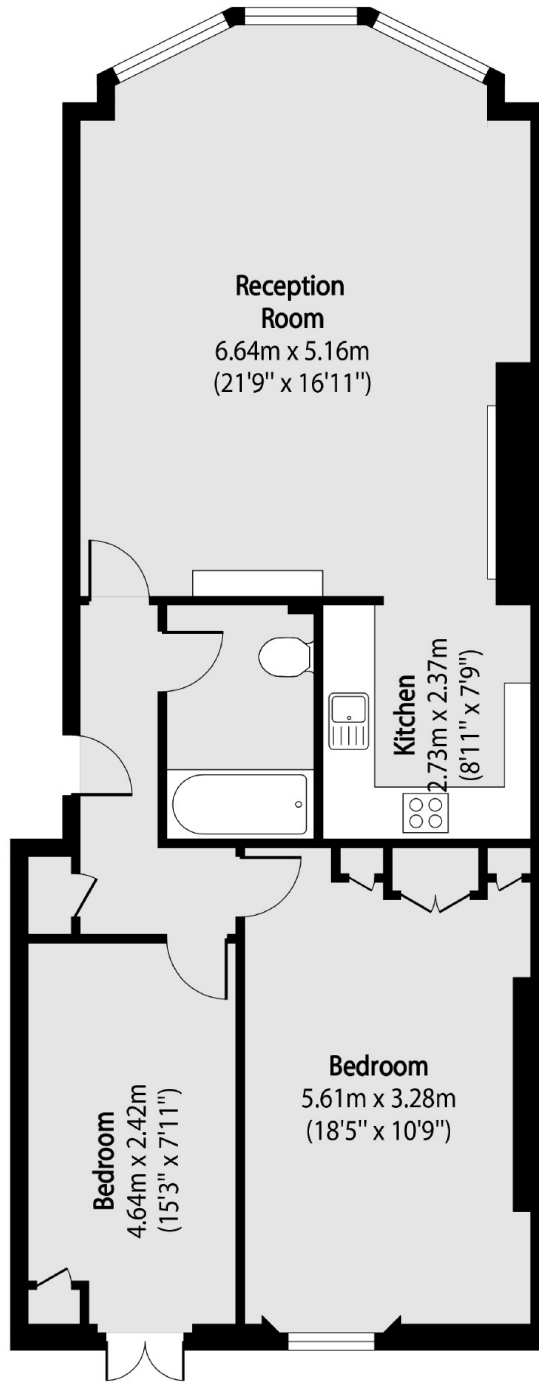
On one of the most sought after tree lined roads in Camden Town is this stunning two bedroom apartment. The property has large windows throughout, an open plan kitchen / reception room and access to a garden.

Camden Terrace is superbly located close to the many amenities of bustling Camden Town, with Regent's Park and Primrose Hill within easy reach. The transport links are fantastic, including Mornington Crescent and Camden Town (Northern line) Camden Road (Overground), London Euston and St. Pancras International.

Features

- Two Double Bedrooms
- Garden
- Share Of Freehold
- Great Location
- Chain Free
- One Bathroom

Camden Terrace,
London, NW1



Total area (approx): 79.50 sq m (856 sq. ft)