



Crowndale Road, NW1

£700,000

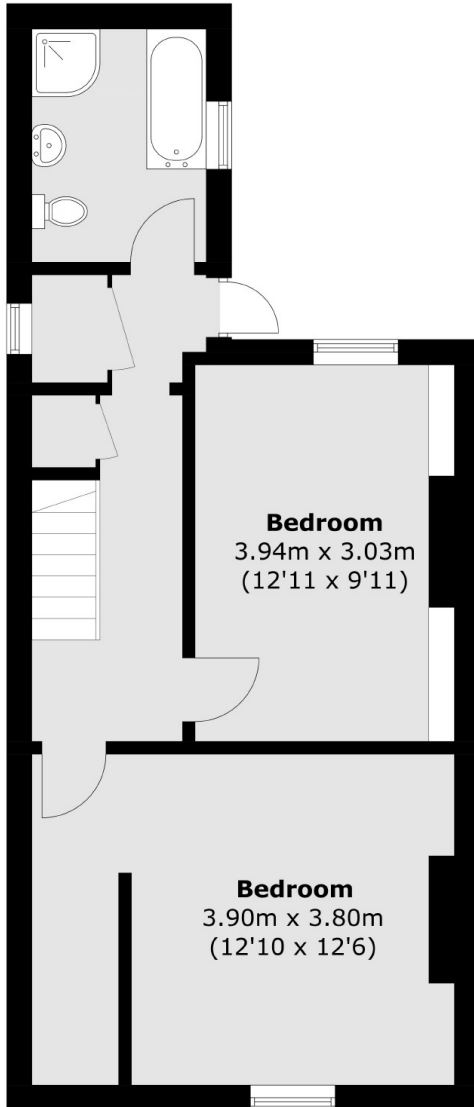
This fantastic split level two bedroom, two bathroom garden flat with a share of freehold. The apartment has a separate reception room and high ceilings throughout.

Crowndale Road is well situated for Mornington Crescent, Euston, Kings Cross and St Pancras International as well as access to Regent's Park. Popular location for students as well due to UCL, SOAS and many other student institutions nearby.

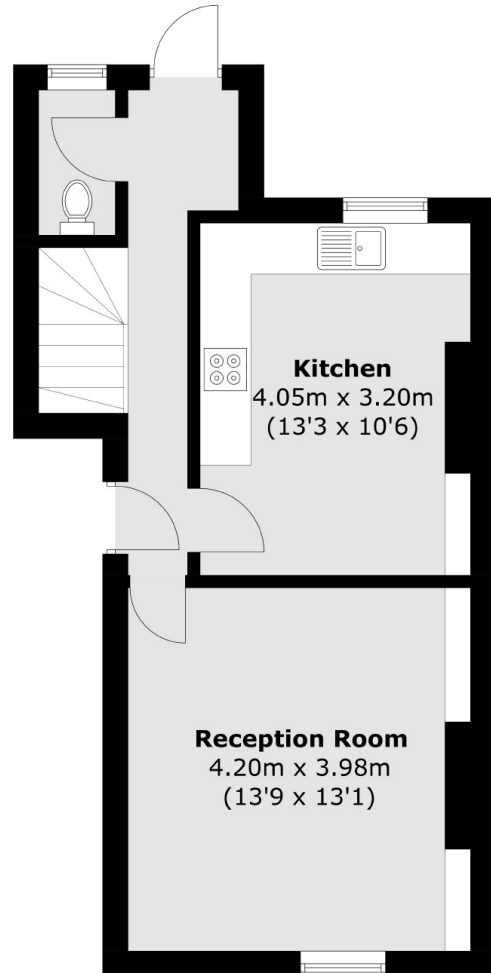
Features

- Two Bedrooms
- Two Bathrooms
- Share Of Freehold
- Chain Free
- Private Garden
- Great Location

Crowndale Road,
London, NW1



Lower Ground Floor



Ground Floor

Total area (approx.): 91.3 sq. m (982.7 sq. ft)