



## Fortess Grove, NW5

£950,000

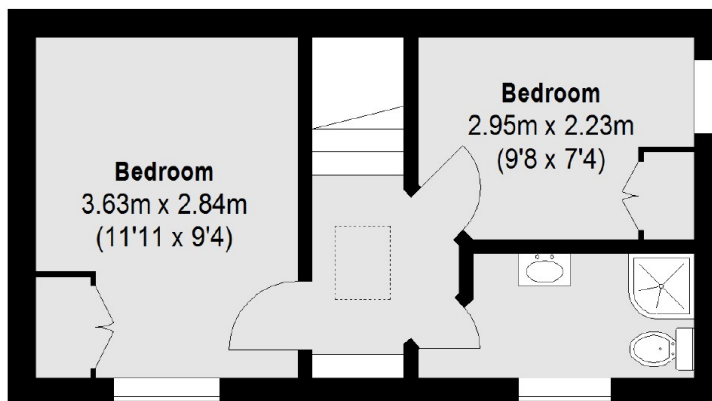
A beautifully presented, three double bedroom, two bathroom detached house with private front garden. This stunning freehold house is situated within a quiet cul-de-sac tucked away in the heart of Kentish Town has a large feature semi-open plan reception room, stylish fitted kitchen and two modern bathrooms.

The property is enviably located to make the most of the area taking in the best of both Kentish Town and Tufnell Park with amenities, eateries and facilities all within easy reach. Parliament Hill and Hampstead Heath are within easy reach and transport links are excellent with three stations with direct links across London.

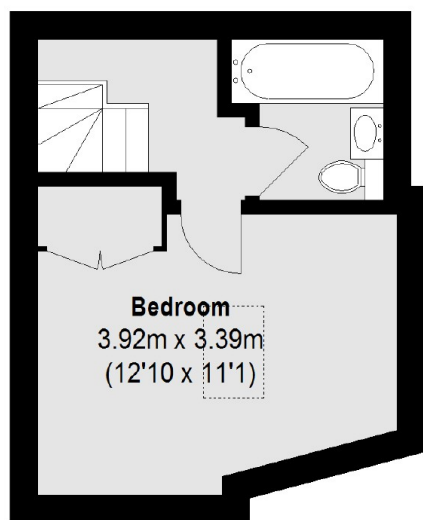
### Features

- Three Double Bedrooms
- Freehold
- Front Garden
- Quiet Cul-De-Sac
- Excellent Condition
- Chain Free

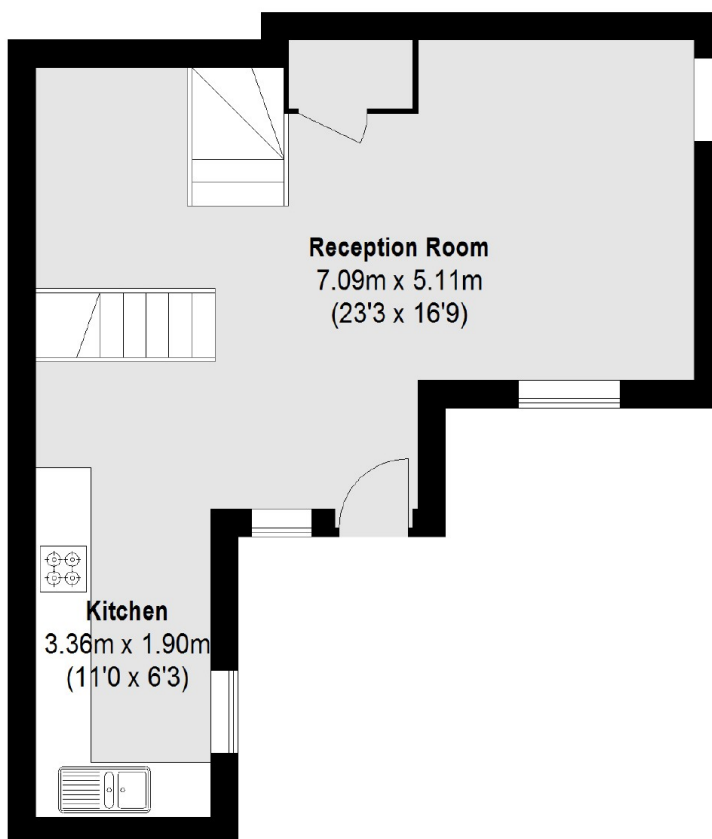
# Fortess Grove, London, NW5



First Floor



Lower Ground Floor



Ground Floor

Total area (approx.): 82.58 sq. m (889 Sq. ft)