



Castle Road, NW1

£1,175,000

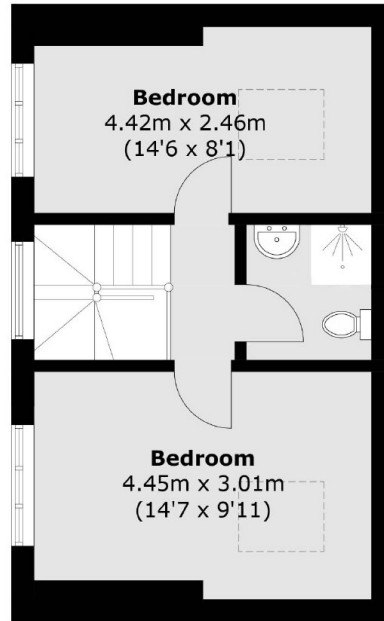
This fantastic five bedroom house is set on a cul-de-sac road in the heart of Kentish Town. The house is set over three floors, with two reception rooms, large windows throughout and a lovely private garden.

Castle Road is a quiet street only a few minutes from the many amenities and excellent transport links of Kentish Town (overground/underground and thameslink) as well as Camden Town Station and Chalk Farm. The house is in the catchment for William Ellis, Camden School For Girls, Holy Trinity, Silas Primary School and by the College Francais.

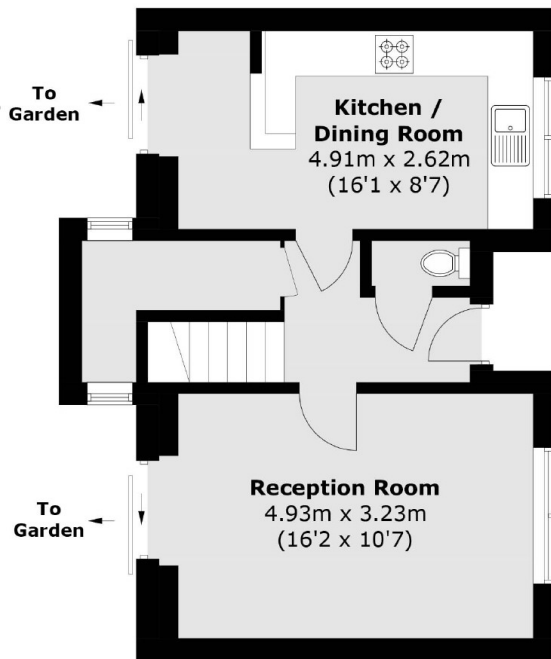
Features

- Five Bedrooms
- Freehold
- Private Garden
- High Ceilings
- Two Reception Rooms
- Chain Free

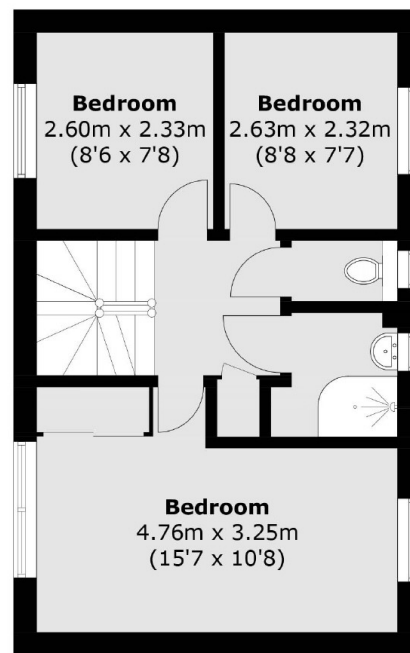
Castle Road, London, NW1



Second Floor



Ground Floor



First Floor

Total area (approx.): 111.4 sq. m (1,199.1 sq. ft)