



Marsden Street, NW5

£475,000

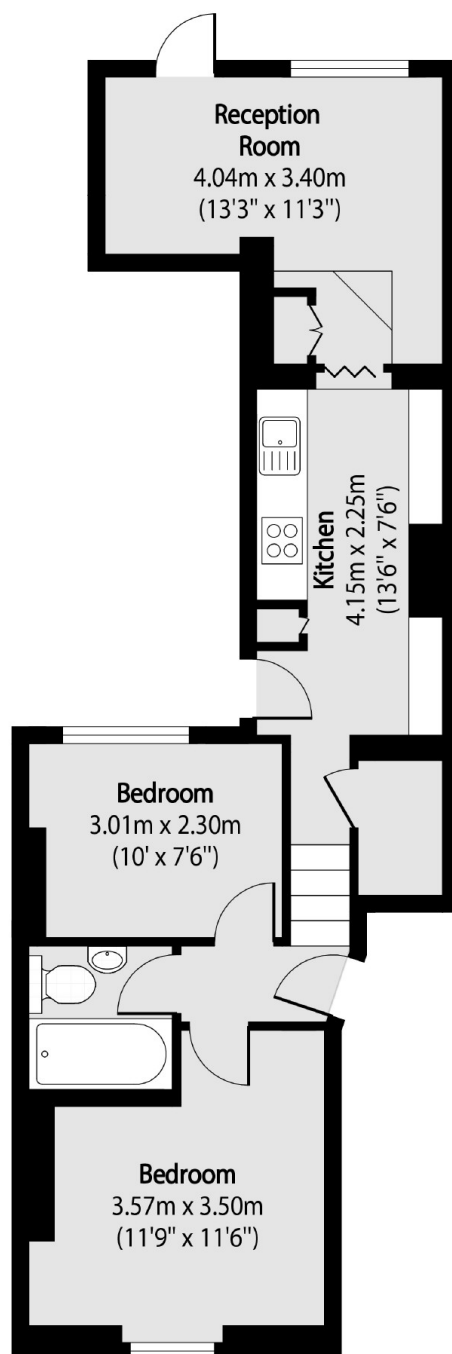
A bright and well-proportioned ground-floor apartment with two bedrooms, one bathroom and a separate living room. The apartment has a private south-facing garden and side courtyard.

Marsden Street is conveniently located within easy reach of Kentish Town, Chalk Farm and Gospel Oak stations and is only a short distance to Hampstead Heath and Primrose Hill. Chalk Farm Underground is just a 0.4 mile walk away.

Features

- Two Bedrooms
- Private South Facing Garden
- One Bathroom
- Leasehold
- Side Courtyard
- Excellent Transport Links

Marsden Street, London, NW5



Total area (approx): 48.07 sq m (517 sq. ft)

Dexters

Kentish Town & Camden
274 Kentish Town Road
London
NW5 2AA
Sales
020 7483 6390

Energy Rating: . We aim to make our particulars both accurate and reliable. However they are not guaranteed; nor do they form part of an offer or contract. If you require clarification on any points then please contact us, especially if you're traveling some distance to view. Please note that appliances and heating systems have not been tested and therefore no warranties can be given as to their good working order.

 **RICS** | Regulated
Estate Agent
and Letting Agent

[dexters.co.uk](https://www.dexters.co.uk)