



Marsden Street, NW5

£500,000

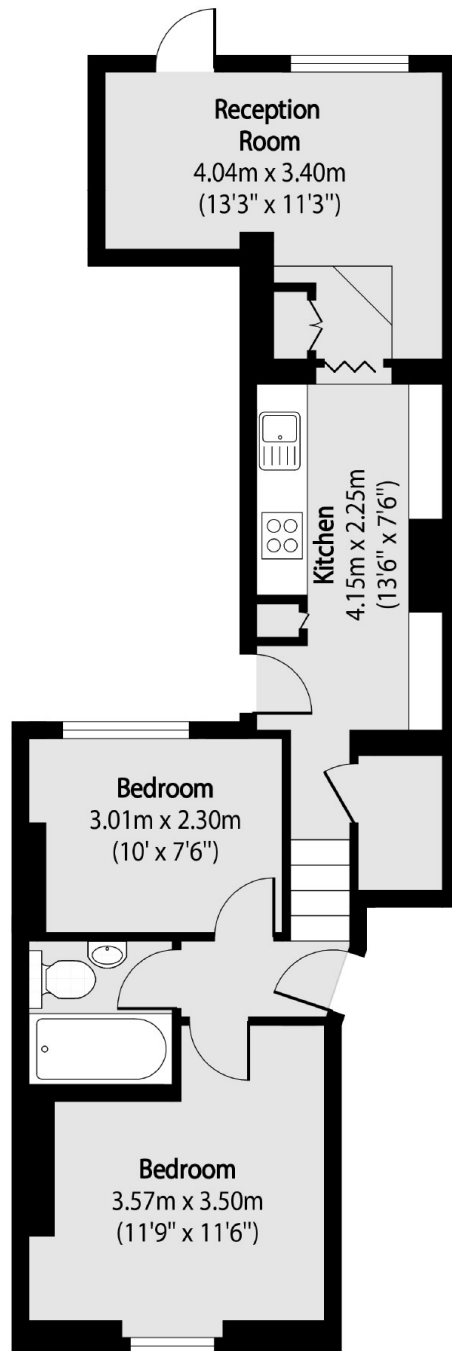
A bright and well-proportioned ground-floor apartment with two bedrooms, one bathroom and a separate living room. The apartment has a private south-facing garden and side courtyard.

Marsden Street is conveniently located within easy reach of Kentish Town, Chalk Farm and Gospel Oak stations and is only a short distance to Hampstead Heath and Primrose Hill. Chalk Farm Underground is just a 0.4 mile walk away.

Features

- Two Bedrooms
- Private South Facing Garden
- One Bathroom
- Leasehold
- Side Courtyard
- Excellent Transport Links

Marsden Street, London, NW5



Total area (approx): 48.07 sq m (517 sq. ft)