



## Prince Of Wales Road, NW5

£1,800,000

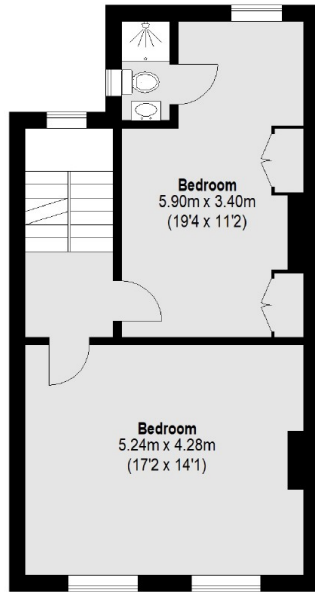
For the first time in decades, is this family freehold house located near the bottom of Belsize Park. The property has an impressive 2,363 square feet with seven bedrooms spanning over four floors. The house is in need of modernisation but has fantastic high ceilings and also has a lovely private garden,

Located at the west end of Prince of Wales Road (close to Haverstock Hill), the property is a short walk to Primrose Hill and Belsize Park. It also has excellent transport links, with both Chalk Farm Underground Station and Kentish Town West Overground less than a five-minute walk away.

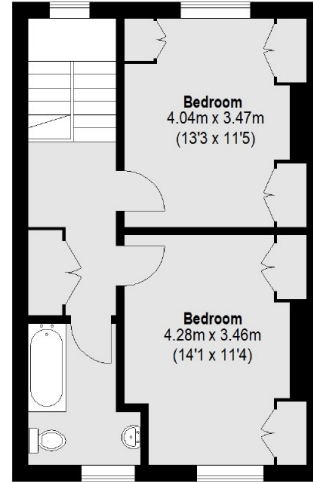
### Features

- Seven Bedrooms
- Freehold
- Slightly Dated
- Private Garden
- Excellent Location
- Approximately 2,400 Sq.Ft

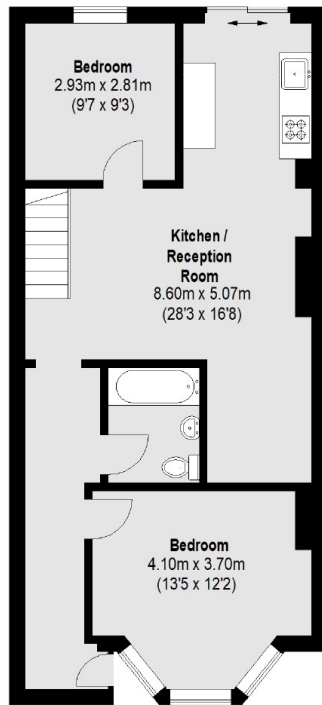
# Prince Of Wales Road, London, NW5



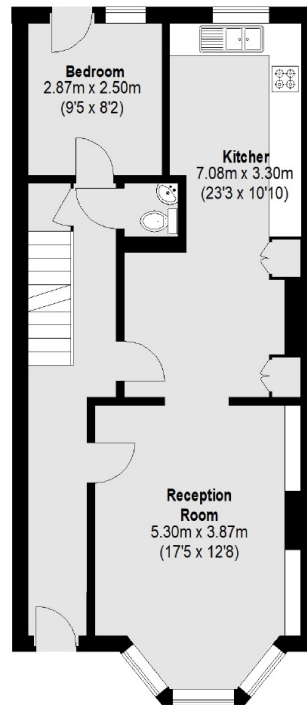
First Floor



Second Floor



Lower Ground Floor



Ground Floor

Total area (approx.): 219.55 sq. m (2363 Sq. ft)