



## St. Leonards Square, NW5

### £380,000

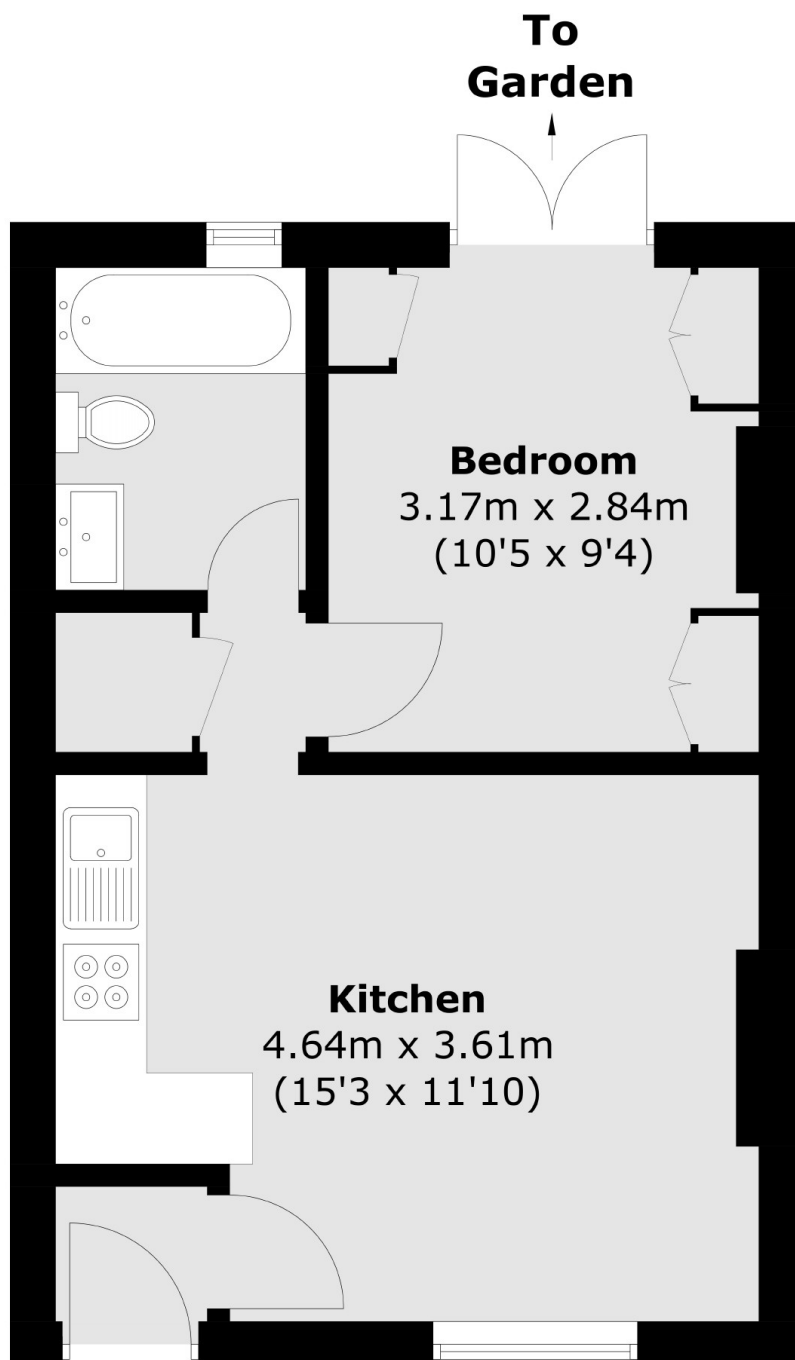
A stylish one bedroom flat set on the ground floor of this Victorian conversion. The apartment has its own private entrance, an open plan kitchen/reception room and access to private front garden and a rear garden.

St Leonard's Square is ideally located within easy reach of local shops and amenities, the abundance of restaurants, coffee shops, eateries and gastro pubs of Kentish Town, Primrose Hill, Belsize Park and Camden Town.

### Features

- One Bedroom
- Private Entrance
- Private Front Garden
- Rear Garden
- Recently Refurbished
- Chain Free

# St. Leonards Square, London, NW5



Total area (approx.): 32.6 sq. m (350.9 sq. ft)