



Burghley Road, NW5

£1,961 Per week

A stunning four double bedroom family home spread over four floors refurbished to a high specification whilst retaining period features throughout. The property boasts a spacious living area, separate high spec kitchen, two bathrooms, ample storage, a balcony as well as the secluded patio garden.

Burghley Road is well situated for Tufnell Park tube station (northern line) as well as the high street, popular with local residents for its independent bakeries, cafes, restaurants and variety of local amenities. Hampstead Heath is also nearby famous for its expansive open spaces and excellent views of the City.

Features

- Impressive House
- Period Features
- Modern Interior
- Four Double Bedrooms
- Family Kitchen/Diner
- Split Level Garden

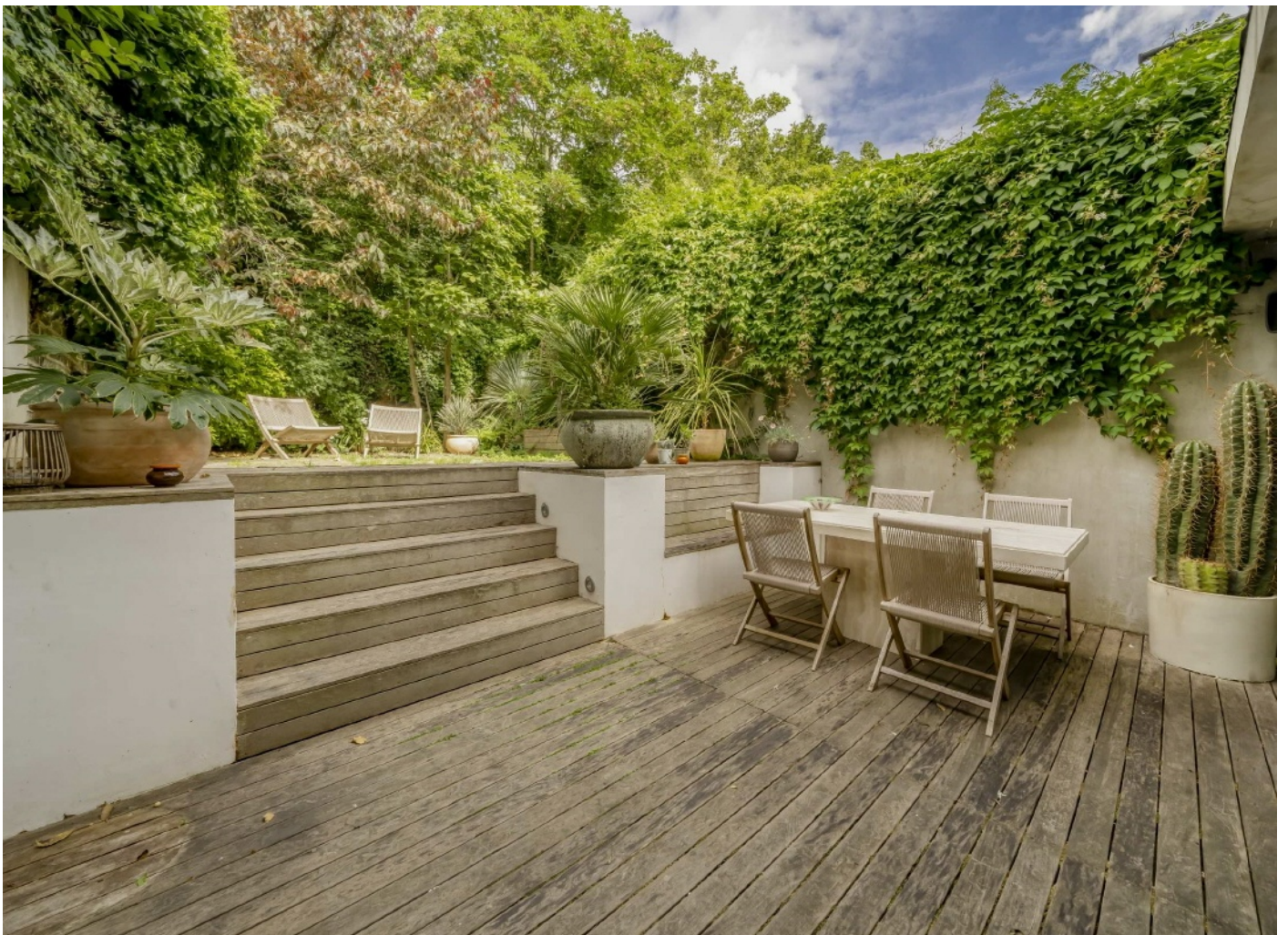


Burghley Road, NW5

This impressive property includes a large glass sliding door from the kitchen to the garden and huge full height feature windows to the rear.

The property has a great balance of modern and period decorations, from an integrated Sonos music system and underfloor heating to original fireplaces and sash windows.

The accommodation comprises of four double bedrooms, two bathrooms (one en-suite), two shower rooms (one en-suite), a 27ft reception room, an 18ft kitchen/diner and a redesigned split-level garden.



Burghley Road, London, NW5

