



Queens Crescent, NW5 £475,000

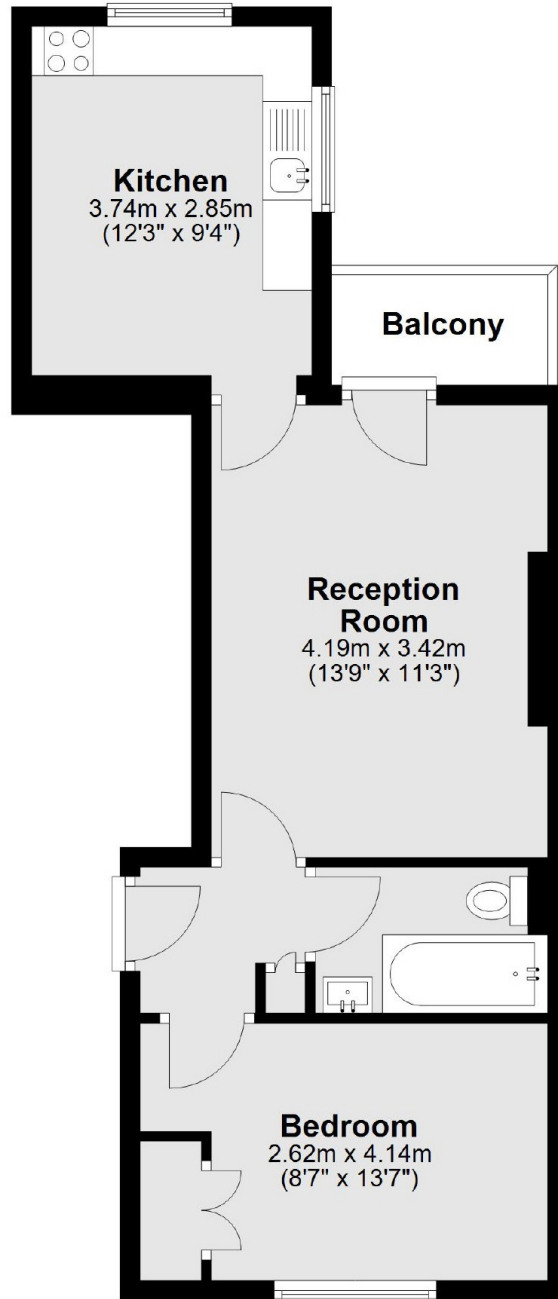
This one double bedroom apartment set on the raised ground floor, features a large reception room with a private balcony and a separate kitchen.

Queens Crescent is ideally situated close to all the amenities of Belsize Park and Kentish Town and located within easy access to local transport links including Chalk Farm underground station (Northern line). Also within walking distance from Hampstead Heath and Primrose Hill Park.

Features

- One Double Bedroom
- Private Balcony
- Chain Free
- Leasehold
- Raised Ground Floor
- One Bathroom

Queens Crescent,
London, NW5



Total area: approx. 44.2 sq. metres (475.8 sq. feet)